



PIXSEA® 1200

BORD A BORD - 02 96 54 18 30 – www.bord-a-bord-boat.com



The thrill of diving in the open sea

The PIXSEA® 1200, designed to accommodate 32 divers and their pilot, has a cabin open at the front, offering a sheltered cockpit. On board, modular installations. Items such as benches and bottle holders can be adapted to specific needs.

Built from aluminum, this boat combines robustness and comfort. Its deck is cleverly designed. Designed to allow for a smooth flow of divers while maintaining onboard comfort, the PIXSEA 1200 is equipped with a toilet. The "GEN#4" hull of the PIXSEA range, developed by the naval architecture firm Œuvres Vives, combines performance and fuel efficiency while... maintaining good access to the sea.

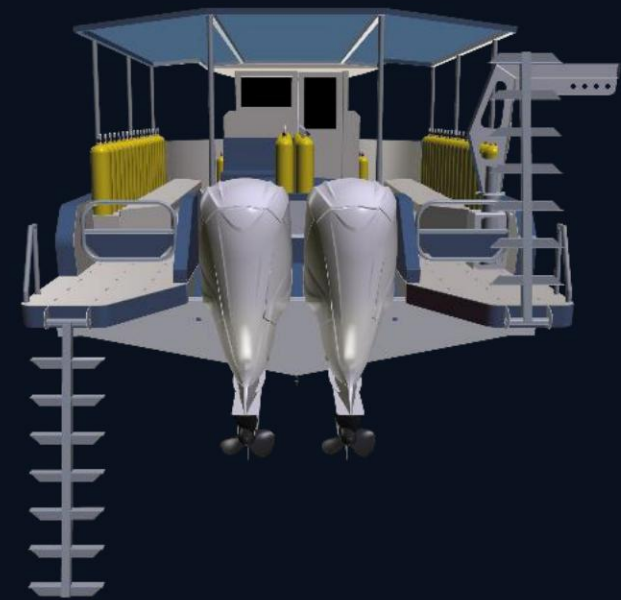
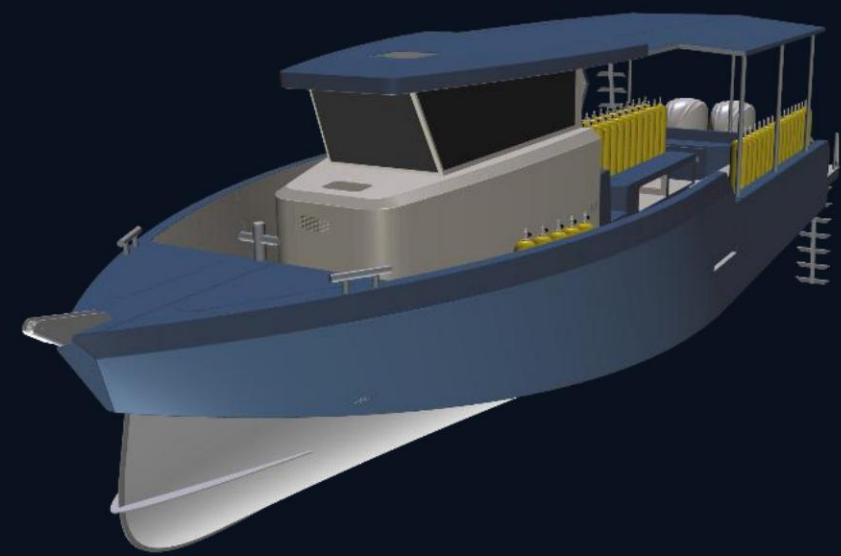
This hull features narrow water inlets to facilitate its passage through the sea. The bow or "beard" design limits spray. Great care is taken with volume distribution to ensure stable handling in three-quarters of a following sea or divided waves.

TECHNICAL SPECIFICATIONS

Living Works Naval Architecture

HULL LENGTH	11.95 m
HULL WIDTH	4 m
DRAFT	0.55 m
MAXIMUM MOTORIZATION	650 hp
RECOMMENDED ENGINE	2x300 hp
SLIGHT DISPLACEMENT	5,990 kg*
MAXIMUM NUMBER OF PEOPLE	32
MAXIMUM LOAD	3,600 kg
APPROVAL	C 32

*Features are indicative only as they depend on the options chosen by the customer





Sustainability

Its eco-friendly design makes it a responsible choice for the future of diving. Its eco-designed hull is made from aluminum composed of 70% recycled aluminum and is 98% recyclable.

Customization

The PIXSEA® 1200 offers a range of options and accessories to personalize your boat to your needs. Do you require custom fittings, a wrap reflecting your business, etc.? Don't hesitate to contact us; we'll work with you to develop your request.



Standard equipment

• Mooring bollard • Bow roller • Anchor locker
• Forward storage locker
• Open aluminum wheelhouse • Aluminum control console • Aluminum driver's seat with storage compartment • Central benches with bottle holders • Side benches along the bulwarks • Storage under the benches

• Aluminum tanks: 2 x 300 liters • Aluminum cleats and railings • 2 aft ladders • Aluminum non-slip deck • Chemical toilet • Registration plate • 2 lifebuoys • 3 x 2 kg fire extinguishers • Anodes on anode holders

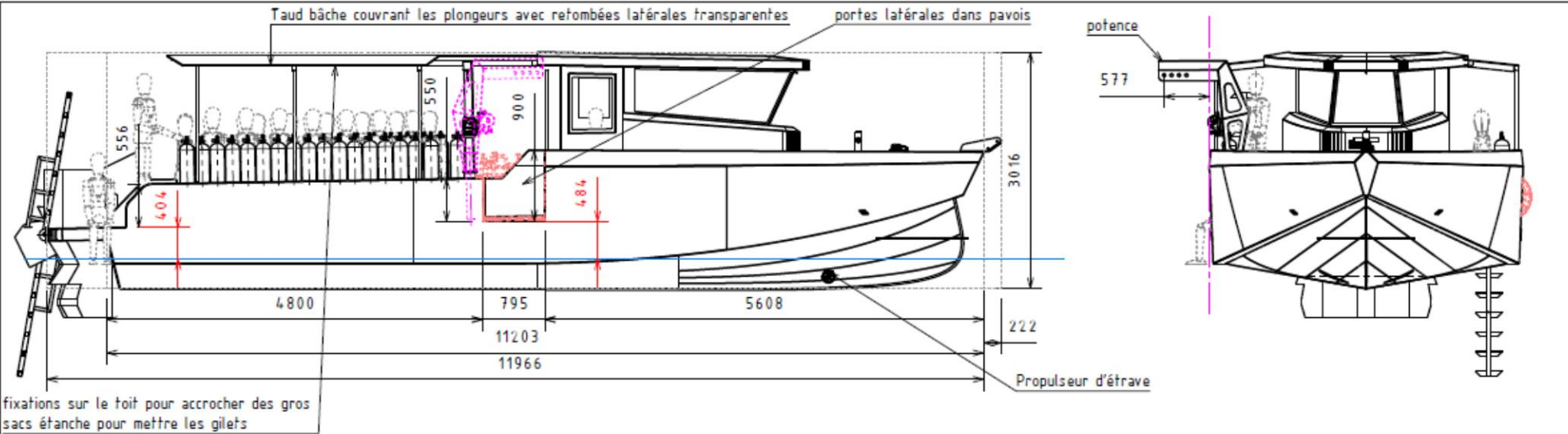
Standard electrical equipment

• Double-pole circuit breakers • Compass • Waterproof electrical panels • USB/lighter sockets • Navigation and diving lights • LED spotlights • Battery boxes • 1000W windlass and 16kg mooring line • Windshield wiper • Bilge pump

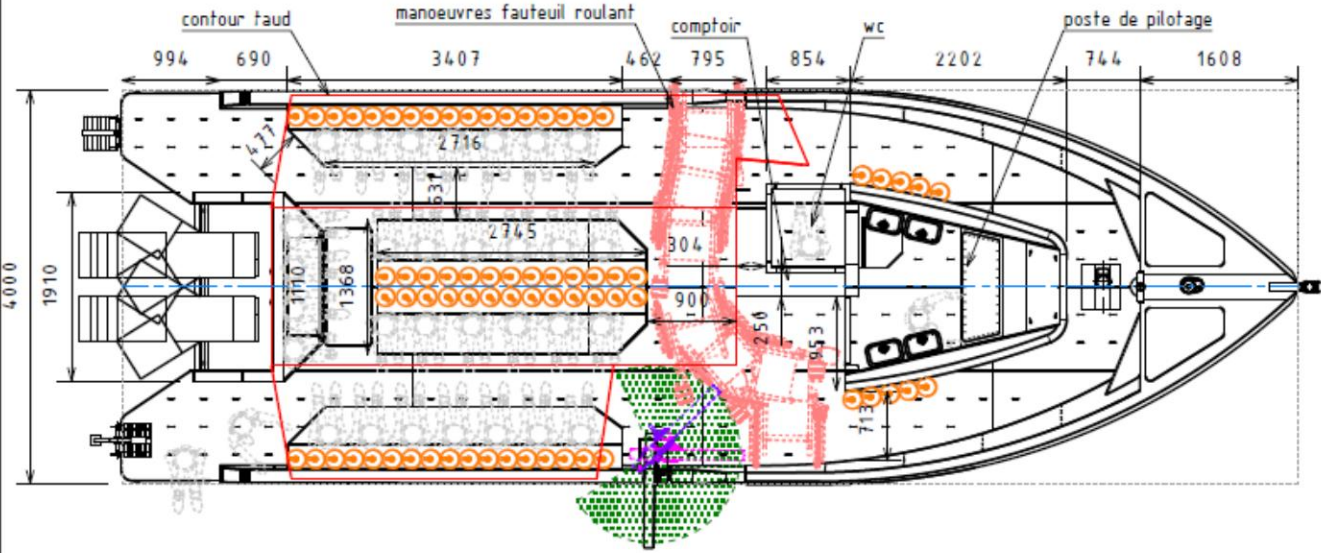
PIXSEA® 1200

General plan (for guidance purposes only)

Plan submitted to the client for approval before construction



TOILETS ON THE DECK



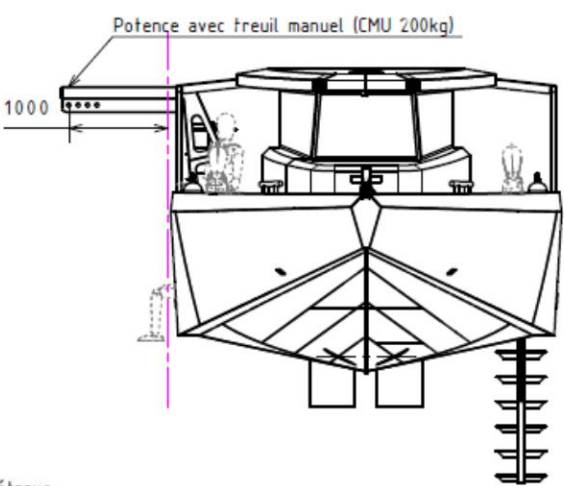
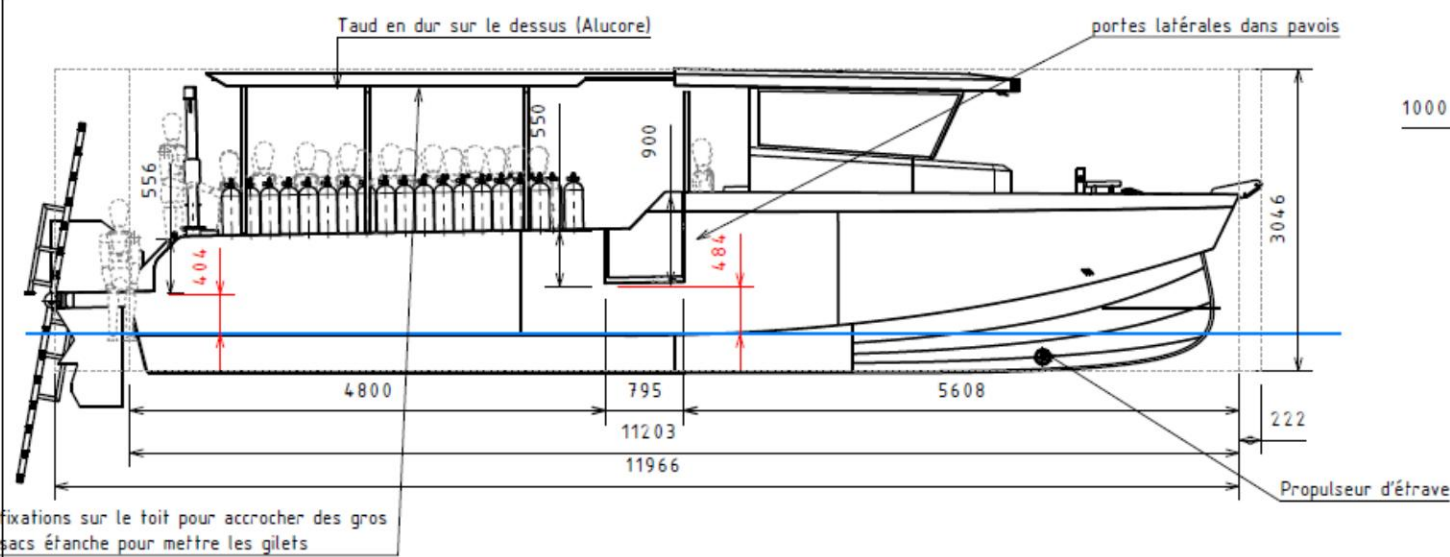
Caractéristiques techniques PIXSEA 1200	
Longueur de coque	11,96m
Largeur hors tout	4m
Deplacement lège armé 2x 300 cv + sécurité	4201 Kg
Deplacement charge (100% carburant +30 plongeurs+ equipage et fret)	8352 Kg
Tirant d'eau charge	0,740 m
Motorisation	2 x SUZUKI DF300 B
Réservoir essence	2 x 300 l
Réglementation plaisance	C30+2
Approbation plaisance	Norme CE
Les caractéristiques du navire sont prévisionnelles et pourront être modifiées suivant les choix du client, du chantier ou des contraintes réglementaires	

 <div>Oeuvres Vives Architecture Navale bâtiment Socrate 23 Boulevard Victor Hugo 31770 Colomiers</div>		Ship: Pixsea 1200 N4		scale: 1:70	revision: 3	
		Title: Général	date: 19/08/2022	format: A4		
		Type : 1 Plan d'ensemble	maturity : APS	sheet: 1 2		

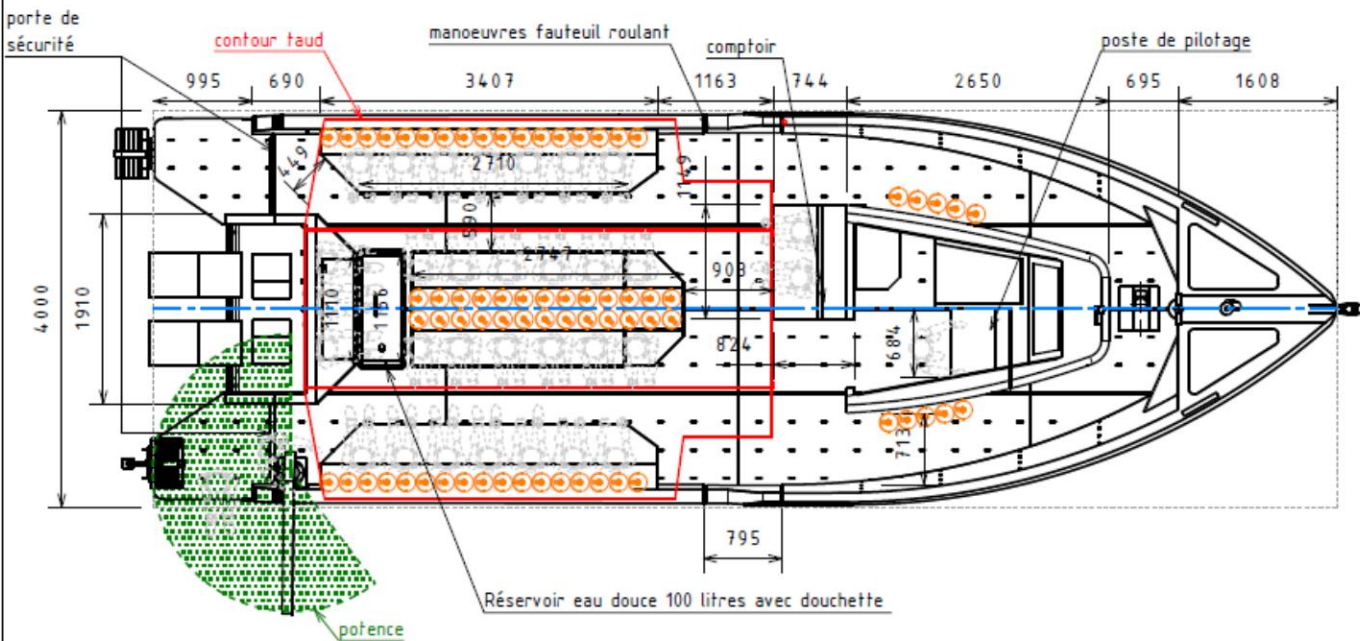
PIXSEA® 1200

General plan (for guidance purposes only)

Plan submitted to the client for approval before construction



TOILETS ON THE DECK



Caractéristiques techniques PIXSEA 1200 N5

Longueur de coque	11,96m
Largeur hors tout	4m
Déplacement lège armé 2x 300 cv (iso) + sécurité	4391 Kg
Déplacement charge (100% carburant +30 plongeurs+ équipage et fret)+ eau douce	8017 Kg
Tirant d'eau charge	0,740 m
Motorisation	2 x YAMAHA 300 cv
Réservoir essence	2 x 300 l
Réglementation plaisance	C30
Approbation plaisance	Norme CE

Les caractéristiques du navire sont prévisionnelles et pourront être modifiées suivant les choix du client, du chantier ou des contraintes réglementaires

PIXSEA® 1200 –

Pricing as described above

PIXSEA 1200

Yamaha 2x300 hp engines

The "engine" service includes: hydraulic or mechanical steering / engine installation / fuel/water separator bowl(s) / electrical connections / electronic connections / batteries (depending on the connected equipment) / battery coupler with peripherals / electrical and galvanic hull inspections by an expert / sea trials

Price excluding VAT* of the PIXSEA® 1200 OPEN (ex-works)

€234,036

* Valid until 31/10/2025

OPTIONS (excluding VAT) – not included, to be selected

Additional cost for 2x400 hp Yamaha V8 engines	€51,000
LOFRANS 1500W windlass with 14kg anchor	€2,300
SE 80 Bow Thruster	€2,300
Economy electronics package: Helix 7 GPS/fishfinder + RT750 AIS VHF radio + antennas	€2,341
Standard electronics package: Helix 9 GPS + RT750 AIS VHF + antennas	€2,812
Medium electronics package: Helix 10 GPS + RT750 AIS VHF + antennas	€3,348
Premium electronics package: Solix 12 GPS + RT1050 AIS VHF + antennas	€5,969
PRO electronics package: Apex 16 GPS + RT1050 AIS VHF + antennas	€7,942
FURUNO 1815 Radar	€3,900
Aluminum Top	€1,950
Sunshade with tarpaulin over passengers	€2,500
Aluminum sheet metal cover over the passengers	€3,000
Alucore honeycomb aluminum awning on the passengers	€4,000
Crystal side fallout	€1,500
Closed wheelhouse with swing door at the rear	€6,500
Gate in the shields	€660
Rear security door	€550
Standard engine protection	€450
Black delta/omega 80x70 mm defense - price per linear meter	€200

Technical specifications and equipment are provided for informational purposes only and may be modified without prior notice from the manufacturer.

Payment terms :

1/3 upon ordering,
1/3 upon return.

Balance due upon departure from the construction site

Tick :

☐ Okay, agreed

☐ I have read and understood the general terms and conditions of sale

Date and sign

PIXSEA® 1200 –

Pricing as described above

Business
Name Surname
E-mail
Phone
Date

Additional cost Lockable drain	50 €
Mast with navigation and restricted maneuvering lights (2 THRed + 2 THWhite + 1 Bb + 1 Tr)	€650
rigid alpha pavilion	€400
Parrot diving ladder	€600
Restricted maneuvering lights	€500
National flagpole	€100
Stainless steel hand winch with gantry (WLL 100/150/200kg depending on the size of the vessel)	€2,500
77-litre fresh water tank with shower head or quick connection	€890
100-litre fresh water tank with shower head or quick-connect fitting	€950
Chemical Toilet	€900
Manual marine toilet with 38l black water tank	€2,500
Electric marine toilet with 38l black water tank	€3,500
Wheelchair access ramp 1500 x 900	€950
2-step step stool	€250
3-step step stool	€350
Aluminium PC table for vertical wall mounting 750x450mm	€750
Aluminum folding seat for 1 person	€450
Aluminum folding seat for 2 people	€800
3-person aluminum jump seat	€1,000
Fin holders - price per linear meter	€950
Logo 500x500 mm	€500
Heat-sealed film on the case	Price upon request
Non-slip paint deck coating	Price upon request
Special aluminum antifouling	€2,200
Trailer, other fittings, transport	Price upon request

Technical specifications and equipment are provided for informational purposes only and may be modified without prior notice from the manufacturer.

Payment terms :

1/3 upon ordering,
1/3 upon return.

Balance due upon departure from the construction site

Tick :

☐ Okay, agreed
☐ I have read and understood the general terms and conditions of sale

Date and sign

Deer Diving – The Seychelles



Hendaye Federal Base



Lagoon Diving in St Cyprien



UCPA in Niollon



Vinci Construction



CREPS ANTIBES



CAP Trébeurden



CMCAS Marseille



DIVING BOATS ON VIDEO

BAB 880

<https://www.youtube.com/watch?v=ZE5LxGBLNP0>
<https://www.youtube.com/watch?v=dXSOISJpP-g>
https://www.youtube.com/watch?v=-PY_PV9fr5I
<https://www.youtube.com/watch?v=1BDWvYQx67I>

900 PIXSEACAT

<https://www.youtube.com/watch?v=shDmS-RngSc>

DERVINIS 1200

<https://www.youtube.com/watch?v=LOQTdy4YQW0>

PIXSEA 1200

<https://youtu.be/NogDdzjzjXQ?si=wanDbLRFd17Sooi8>
<https://youtu.be/jw5V-flglTE?si=T8fA-2v4fnkOBX5W>
https://youtu.be/-06OysZ7_Ts?si=JcQ9bjMaQLune0y_
<https://youtu.be/DyAS8SIR8nk?si=5cylGOqWIDc9m4ZF>
<https://www.youtube.com/watch?v=TjUIdgPVy0g>
<https://www.youtube.com/watch?v=OJtSGvaNQxA>

PIXSEA 900

<https://youtu.be/mljReEc83MY?si=k0U57Ka7VlxsshYY>
<https://www.youtube.com/watch?v=jGAINSUAflg>

PIXSEA 1200 PRO

https://youtu.be/xqeeeTK1aGY?si=X1jCBUEw_8lobbAS

THE PIXSEA 1200 UNDER CONSTRUCTION





Unsinkable aluminum
Customizable ships

Who are we ?

Bord à Bord is an aluminum shipyard renowned for its expertise and know-how for over 20 years (established in 2001). With the takeover of the shipyard in 2019, Loïc and Laurence Cheynet are revitalizing Bord à Bord with the aim of developing new boat models tailored to customer needs.

Indeed, Bord à bord offers a range of aluminum boats up to 24 meters for professionals, recreational boaters, and adventurers passionate about the marine world. Each new build is a unique project, designed according to the client's needs with precise specifications.

Passionate about their craft, our teams of boilermakers, welders, electromechanical technicians, carpenters, architects, engineers, and naval technicians are involved in every project to design, manufacture, and customize high-quality boats, 100% made in France and Brittany.

Shortest possible supply chains and an eco-design approach demonstrate our daily commitment to sustainable products.

In order to involve the client more in the heart of the construction process, production monitoring is regularly established by sending photos of the different stages of construction of the boat.

<https://bord-a-bord-boat.com/>



BRETAGNE⁰⁵



VISION

We make every effort to enable our recreational boating customers to live their passion and fulfill their dream, and to enable our professional customers to work on safe, high-performance boats adapted to their profession.

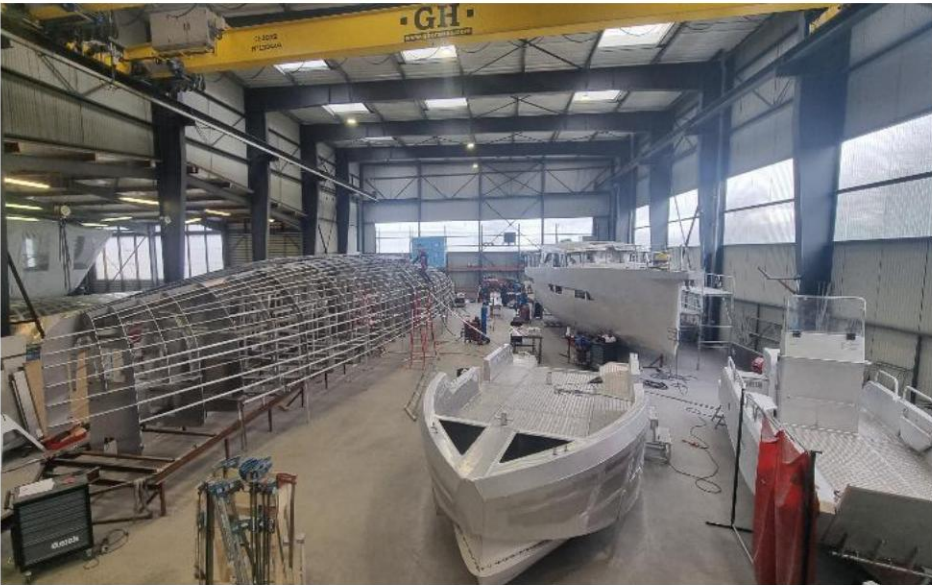
ASSIGNMENT

Our mission is to design and manufacture aluminum boats that meet our clients' specifications and current regulations. Participating in the ecological transition is a point of honor at Bord à Bord, which is why we design environmentally friendly boats.

PEOPLE FIRST

At Bord à Bord, we firmly believe that actively listening to our customers allows us to constantly improve and innovate to enhance our products. This enables us to offer them the solutions best suited to their businesses. Teamwork is a real asset, both internally and with our many partners.





Band **Armor Marine**
International
IN NUMBERS

+600 ships on the water

35 ships from 4 to 24 m produced per year

37 employees

G2+ rating Bank of France

2,000 m2 workshop

70% of revenue from professional boats

25 to 66% of revenue outside mainland France, depending on the year

Our in-house skills



Naval architecture: design and conception



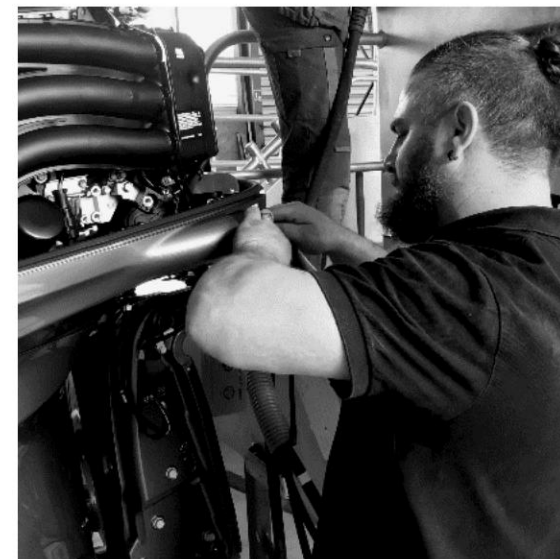
aluminum fabrication



Electromechanical



Design and construction of interior layouts for
habitable vessels & refit





Why choose an aluminium boat?

QUALITY

Our boats are fully welded using the TIG/MIG protocol, and everyone is involved in ensuring quality control.

LIFETIME

Aluminium is synonymous with durability; buying an aluminium boat is a long-term investment.

AESTHETIC

Our boats feature a brushed surface treatment for a refined finish. Numerous options are available to personalize the boat's design.

ROBUSTNESS

The structure and optimized thickness of the aluminum used in the boat give it strength and durability.

RESISTANCE

Aluminium offers high resistance to shocks and friction.

ENVIRONMENT

The aluminum used in manufacturing is composed of 70% recycled aluminum. Aluminum can be recycled up to 98%, confirming our eco-friendly approach.

design.

UNSUNDMERSIBILITY

All our professional vessels and boats are of unsinkable design

FLAMMABILITY

Safety on board is enhanced by the non-flammable nature of aluminum.



Armor Marine Group

International

Amarès - Guimaëc (29)

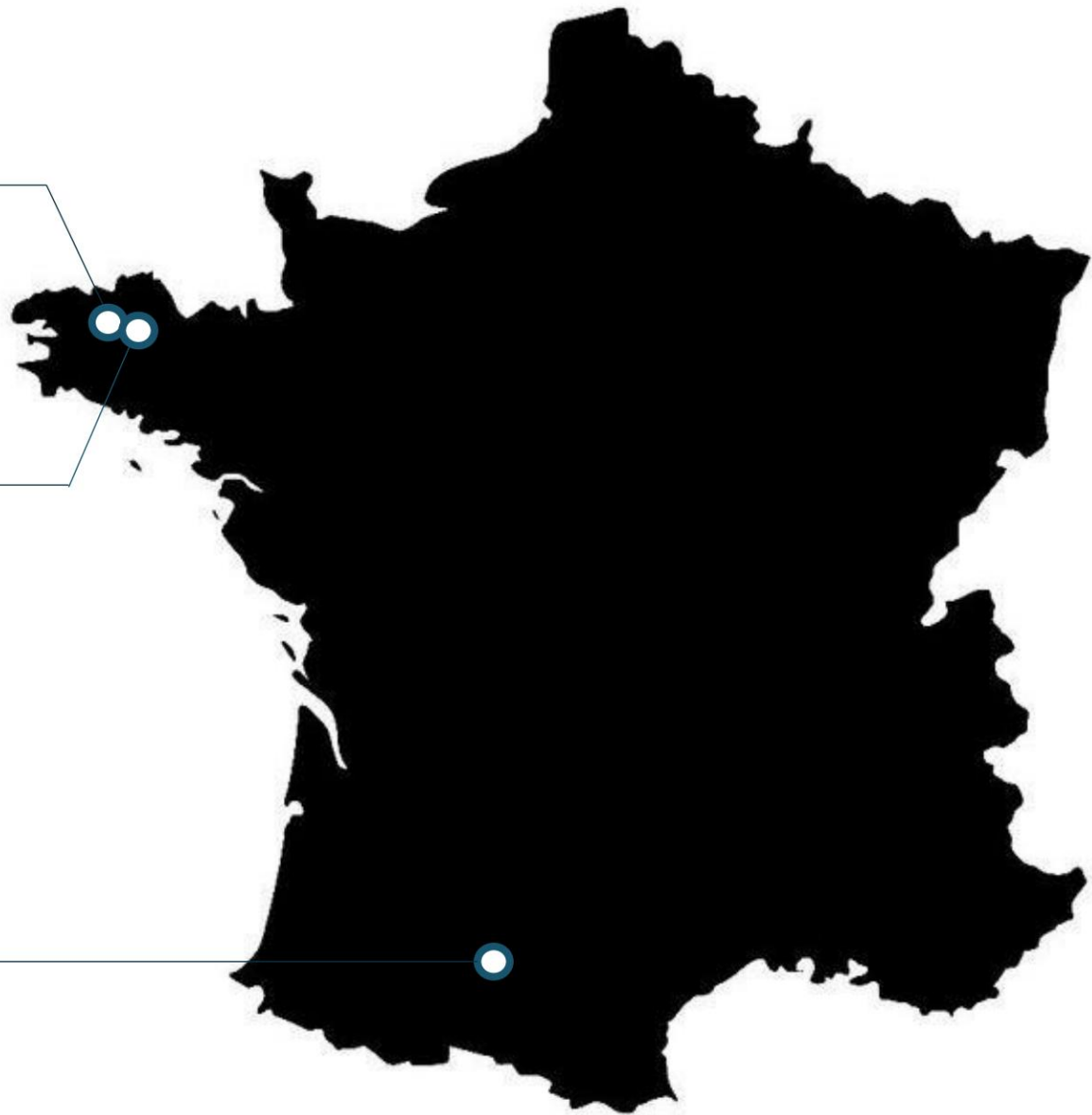
Aluminum shipbuilding workshop

Bord à Bord - Plestin les Grèves (22)

- *Aluminum shipbuilding workshop*
- *Electromechanical workshop*
- *Interior design and carpentry workshop*
- *Design office*
- *Seat*

Occitanie Marine Engineering Living Works® - Colomiers (31)

Naval architecture design office



SOME REFERENCES



BOATS SIDE BY SIDE AROUND THE WORLD



GENERAL TERMS AND CONDITIONS OF SALE 1/2

These general terms and conditions of sale govern all sales of Goods by BORD A BORD to the Buyer. They apply to the contractual relationship between BORD A BORD and any Buyer and constitute the legal basis for all sales that have not been the subject of specific express agreements accepted by both parties.

ARTICLE 1 - APPLICATION OF THE GENERAL TERMS AND CONDITIONS OF SALE These

General Terms and Conditions of Sale (22/04/2020) are systematically sent or given to each buyer to enable them to place an order and apply automatically to all sales of new motorboats or pleasure craft manufactured by BORD A BORD. Consequently, placing an order implies the Buyer's full and unreserved acceptance of these General Terms and Conditions of Sale, to the exclusion of all other documents such as brochures and catalogs issued by the Company or the manufacturer of the Goods, which are for informational purposes only.

ARTICLE 2 - ORDER - MODIFICATION OF GOODS - DELIVERY The order is final once the Bord à Bord quote or order form has been accepted and signed by the Buyer. Any modification to the order must be agreed upon in writing by both parties. Any modification will automatically result in a postponement of the initially scheduled delivery date. The sale of the boat will be formalized by a signed delivery note.

ARTICLE 3 - DATE OF AVAILABILITY AND COLLECTION OF GOODS The date of availability of the goods is specified in the order form. For personalized goods (subject to options), the availability date is given for informational purposes only. As soon as the Company has carried out the necessary checks with its suppliers, it will inform the buyer and provide a firm date.

The Buyer agrees to take delivery of the goods at the Bord à Bord shipyard (EXW) within 15 days of the availability date indicated on the order form. After this period, Bord à Bord may, at its discretion, cancel the sale without prior notice and dispose of the goods. The deposit paid by the Buyer will remain the property of Bord à Bord.

ARTICLE 4 – GUARANTEES AND LIABILITIES

4.1 COMMERCIAL WARRANTY

The Buyer benefits from the BORD A BORD commercial guarantee under the following conditions and terms:

The warranty is 1 year on the aluminium structure of the boat in the case of metalwork and installation of accessories for professional boats.

The warranty is 2 years on the aluminum structure of the boat, including metalwork and installation of accessories for pleasure boats.

The warranty is 1 year on accessories - Manufacturer's warranties. The warranty is personal to the Buyer and non-transferable. The warranty applies provided that the usage recommendations indicated in the Owner's Manual are respected.

Any work on the boat without the manufacturer's written authorization will result in the loss of this warranty and possibly legal action.

If the warranty return requires Bord à Bord's intervention, this will be done in their workshop.

In this case, the costs associated with returning the boat to the workshop will be borne by the boat owner.

4.2 LEGAL GUARANTEES If the

owner makes any modifications to the goods, they must use a professional or authorized repairer for maintenance, repairs, or the supply of spare parts. Otherwise, the Buyer will lose the benefit of Bord à Bord's legal guarantees.

ARTICLE 5. – PRICE The

selling prices of the Goods are those applicable at the time of signing the quote or order form for series boat models.

The selling prices of the goods may be adjusted at the time of ordering the raw material and other components in the case of custom-made models or models that have been modified by a naval architect.

In the case of specific requests from Maritime Affairs, certification bodies, classification bodies, maritime or river experts or other authorities, during or after construction, additional costs could generate a price increase.

In the event of significant price fluctuations of +/-5% of raw materials or components at the time of ordering them, an adjustment of the selling price may also take place.

Shipping costs are not fixed; they may be updated at the time of delivery.

Prices are quoted in euros excluding VAT.

However, the costs of launching, launching, handling, packaging, transport, delivery, storage, registration, and customs clearance remain the responsibility of the Buyer. Any tax, duty, fee, or other charge payable under French regulations or those of an importing or transit country is also the Buyer's responsibility.

GENERAL TERMS AND CONDITIONS OF SALE 2/2

ARTICLE 6. - PAYMENT 6.1.

TERMS Unless

otherwise stipulated in our quotes or order forms, the Buyer shall pay a deposit of 30% of the price including VAT upon ordering, the said sum not constituting in any case a down payment.

The goods are delivered by Bord à Bord (ex-works EXW) only upon full payment.

Bord à Bord does not intend to grant any discount for cash payment or payment made before the date resulting from these Terms and Conditions.

6.2. LATE PAYMENT

Any sum not paid by the due date indicated on the quote or order form will automatically incur penalties equal to three times the legal interest rate. In addition to late payment penalties, a fixed fee of €40 will be charged for recovery costs.

ARTICLE 7 - TRANSFER OF RISKS

7.1. TERMS AND CONDITIONS

From the date of delivery of the Goods, including delivery to Bord à Bord's premises, the risks, including loss, theft, deterioration of the Goods or damage caused by these latter, are transferred to the Buyer notwithstanding the retention of title subject of Article 9 below. Therefore, it is the Buyer's responsibility, from the moment of the transfer of risks, to insure the goods sold against theft, fire or any other form of destruction, degradation, accidents, or disappearance. It also belongs to The Buyer is required to take out insurance guaranteeing their civil liability. Bord à Bord se disclaims all penalties for loss of operation following immobilization of the vessel. The client agrees not to recover funds from Bord à Bord beyond the limits of their policy. insurance.

7.2. IN THE CONTEXT OF A SALE ABROAD

For sales of goods destined for foreign countries, the transfer of risks and costs will be carried out according to the ICC Incoterm mentioned in the quotation or purchase order, latest version in force at the time the offer was established.

ARTICLE 8. - RETENTION OF TITLE

The goods remain the property of the company Bord à Bord until full payment of the price.

ARTICLE 9 – MISCELLANEOUS PROVISIONS In

the event that one or more of the stipulations of these General Terms and Conditions are (in) t if set aside by a legislative or regulatory provision or by a court decision, all other provisions would remain applicable.

ARTICLE 10. – FORCE MAJEURE

The occurrence of a force majeure event has the effect of suspending the execution of the contractual obligations of the company Bord à Bord à Bord.

Force majeure is defined as any event beyond Bord à Bord's control that prevents its normal operations during the manufacturing or shipping of products. Force majeure events include, but are not limited to, total or partial strikes, strikes by Bord à Bord's suppliers, subcontractors, or carriers, as well as interruptions in transportation, energy supply, raw materials, or spare parts , and pandemics and epidemics.

ARTICLE 11. – APPLICABLE LAW - JURISDICTION For all disputes

relating to the application of these general terms and conditions of sale or services provided by BORD A BORD, the Commercial Court of Saint-Brieuc shall have sole jurisdiction.