







# An innovative concept VALKYRIE BOAT

A new range of customizable and high-performance vessels  
manufactured and designed in France by Œuvres Vives.

## Guilhem ANDRE

Naval architect at Œuvres Vives Architecture Navale



*"It took many trials and many hours of design to perfect a concept that was dear to our hearts. After years of research, we built a vessel that is stable in all sea conditions, a robust vessel that can withstand bad weather and heavy use, a durable vessel that fears neither the years nor unforeseen events, and finally, a customizable vessel that can meet everyone's needs, all thanks to its 100% 5083 H111 aluminum construction."*



## ECO-DESIGNED

98% of the aluminum is recycled, confirming our eco-design approach. The aluminum used is composed of 70% recycled aluminum.

Aluminium is synonymous with durability. Buying an aluminium boat is a long-term investment;



## A deep "V" hull

In naval architecture, a hull is considered to have a deep V from 20 degrees, and this is what we find at a minimum at the rear on the entire VALKYRIE BOAT range.



## UNSINKERBIBLE

A special seawater-resistant and non-spongy foam ensures the ship's buoyancy under all circumstances, even in the event of major damage.

Buoyancy is greater than the ship's carrying capacity. Have faith in your ship; it will always bring you safely back to port!



## "A VERSATILE VESSEL that can be customized to your needs"

The VALKYRIE BOAT range **is fully customizable**, it comes in sizes from 6m to 12m to suit your activities.

Need a fishing support? A livewell? An extra tackle box or rod holders?

This is not a problem thanks to the use of aluminum, which offers unparalleled flexibility.

The Valkyrie 6 was designed according to the same principle as a classic semi-rigid hull. The distribution of hull/tube volumes is essentially the same.

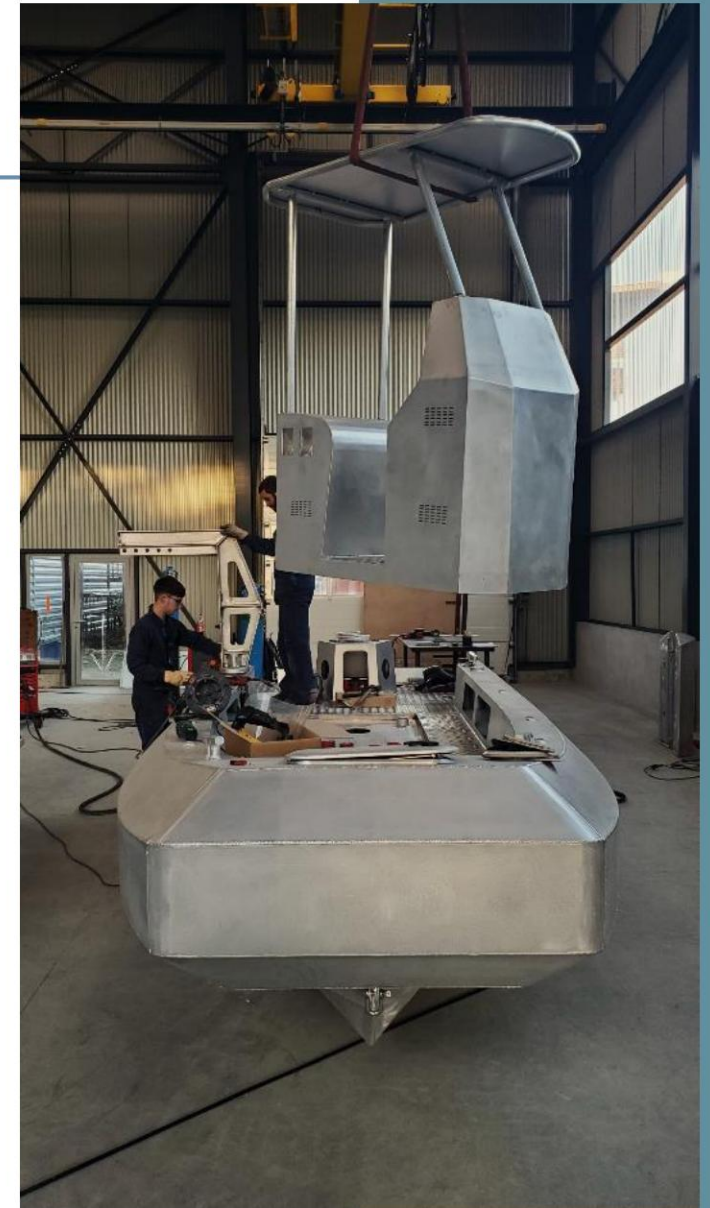
In conclusion, it offers all the advantages of a rigid inflatable boat without its drawbacks!

Whatever your program, do not hesitate to contact us, we will study your request together.

**To contact us :**

[contact@valkyrieboats.com](mailto:contact@valkyrieboats.com) or

[laurence.cheynet@bab-boat.com](mailto:laurence.cheynet@bab-boat.com)



# VALKYRIE 1200 IB 2x550Z





# VALKYRIE 1200 IB 2x550Z



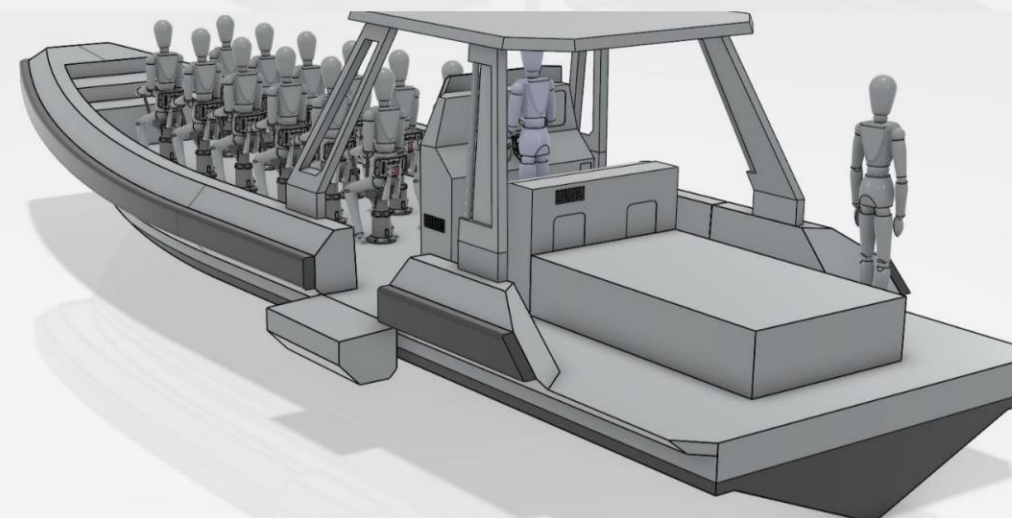
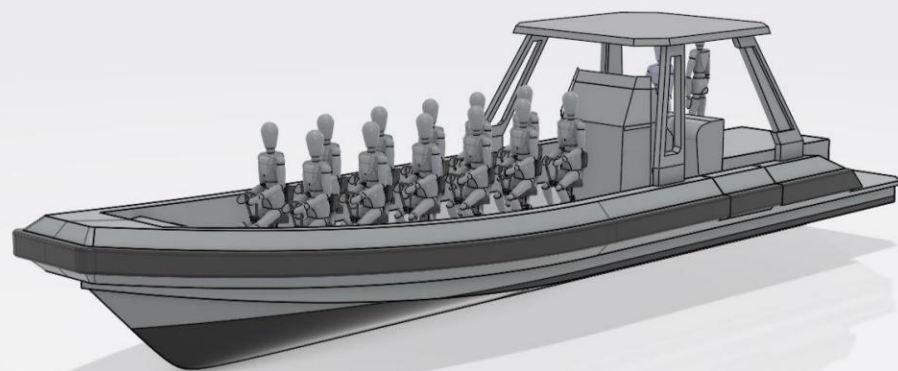
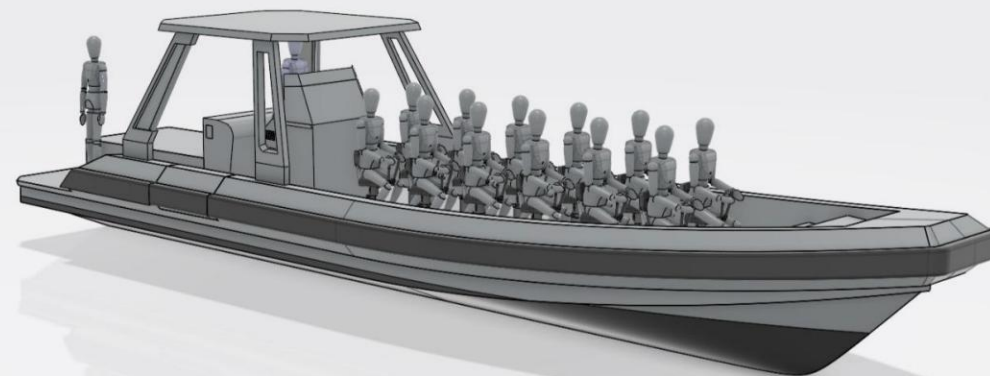
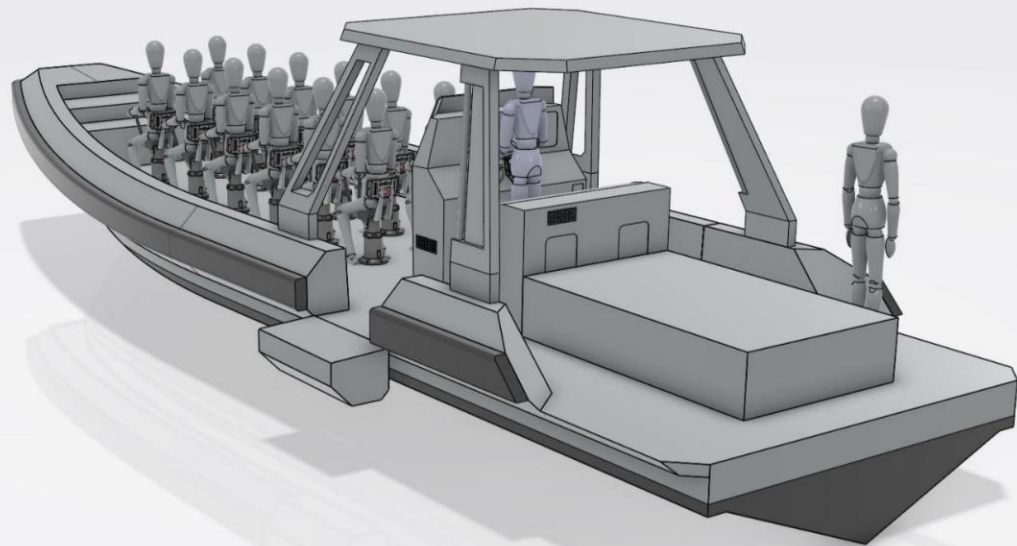
*Characteristics to be confirmed following the preliminary study*

# VALKYRIE 1200 IB 2x550Z



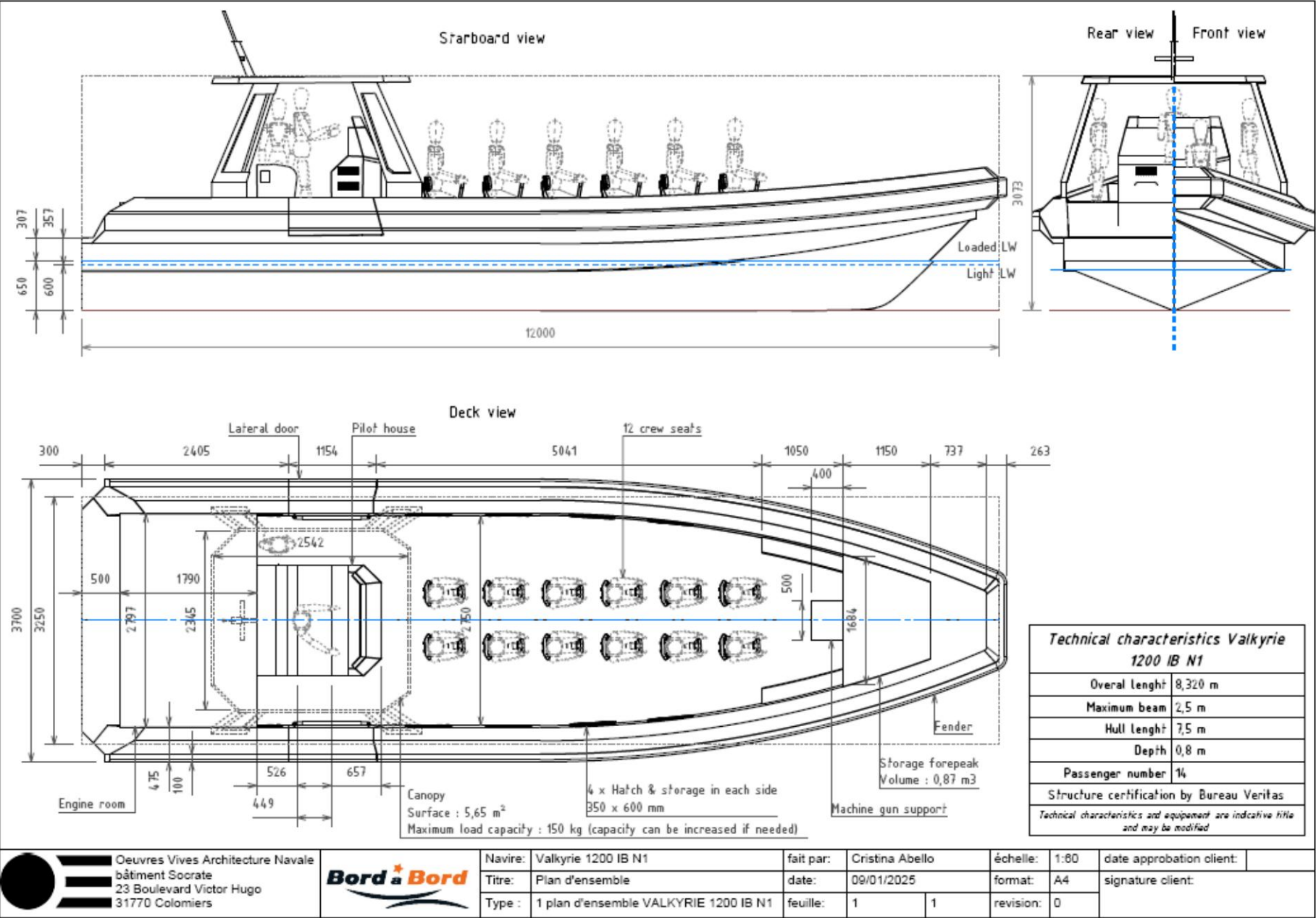


# VALKYRIE 1200 IB 2x550Z





VALKYRIE 1200 IB 2x550Z



### Konrad 680B Stern Drive + connecting cardan

.....

A1) Entretien/hautes performances : Utilisation de la puissance maximale limitée à 10 % du temps. Vitesse de croisière à régime moteur <90 % du régime nominal - Utilisation maximale 200 heures par an.

A2) Entretien/usage de puissance usage commercial : Utilisation de la puissance maximale limitée à 15 % du temps. Vitesse de croisière à régime moteur <90 % du régime nominal - Utilisation maximale 1 000 heures par an.

B Service léger : Utilisation de la puissance maximale limitée à 10 % du temps. Vitesse de croisière à régime moteur <90 % du régime nominal - Utilisation maximale 1 000 heures par an.

B Service intensif : Utilisation de la puissance maximale <25 % de la puissance d'offalation. Vitesse de croisière à régime moteur <85 % du régime nominal - Utilisation maximale 1 000 heures par an.

D Service continu

.....

**POUR DE PLUS AMPLES INFORMATIONS SUR LES EVALUATIONS DISPONIBLES NE FIGURANT PAS DANS CE DOCUMENT, VEUILLZ CONTACTER LE RESEAU DE VENTE INNOUESTRLE PPT OU VISITER NOTRE SITE**  
**WWW.PPTINNOUESTRLE.COM**

**SPÉCIFICATION SOUSMISE À CHANGEMENT SANS PRÉAVIS**



Cruising speed at engine speed <90% of nominal speed - Maximum use 1,000 hours per year.

## PUISSANCE & COUPLE

LEGENDE				
Agencement	Traitement de l'air	Turbocompresseur	Système d'injection	Système d'échappement
L (en ligne)	TC (Turbocompresseur)	WG (Wastegate - Soupape de décharge)	M (Mécanique)	EGR (Exhaust Gas Recirculation)
	NA (Alimentation atmosphérique)		CR (Common Rail)	SCR (Réduction catalytique sélective)
	TCA (Turbocompresseur avec refroidisseur d'air)		MPi (Multi Point Injection)	





# VALKYRIE 1200 IB 2x550Z

## Twin Disc Marine Transmissions

## MG-5075 Series

### MG-5075 SERIES

**MAXIMUM 455 KW (610 HP)  
@ 2500 RPM (PLEASURE CRAFT)**

#### STANDARD EQUIPMENT

MG-5075SC/MG-5075A/MG-5075IV

- Mechanical control valve
- Oil strainer

MG-5075SC

- Near coaxial, aluminum housing

MG-5075A

- Near coaxial, aluminum housing
- 7° down angle on output shaft

MG-5075IV

- Integral V-drive, aluminum housing
- 15° down angle on output shaft



#### INPUT RATINGS

Reduction Ratios :1		Pleasure Craft @ 2500 RPM	Light Duty @ 2300 RPM	Intermediate Duty @ 2100 RPM	Medium Duty @ 1800 RPM	Continuous Duty @ 1800 RPM
MG-5075SC	0.80, 0.92 1.00, 1.16	419 kW (550 hp)	355 kW (476 hp)	268 kW (360 hp)	205 kW (275 hp)	186 kW (249 hp)
	1.06, 1.33, 1.53 1.77, 2.05	455 kW (610 hp)	368 kW (493 hp)	283 kW (380 hp)		
	2.53	410 kW (550 hp)	355 kW (476 hp)	268 kW (360 hp)		
	2.88	403 kW (540 hp)	348 kW (467 hp)	261 kW (350 hp)		
MG-5075A	1.06, 1.33, 1.53 1.77, 2.05	455 kW (610 hp)	368 kW (493 hp)	283 kW (380 hp)	205 kW (275 hp)	186 kW (249 hp)
	2.53	410 kW (550 hp)	355 kW (476 hp)	268 kW (360 hp)		
	2.88	403 kW (540 hp)	348 kW (467 hp)	261 kW (350 hp)		
MG-5075IV	1.06, 1.33, 1.53 1.77, 2.05	423 kW (567 hp)	355 kW (476 hp)	268 kW (360 hp)	205 kW (275 hp)	186 kW (249 hp)

For service classification definitions and important notes refer to the Twin Disc Marine Product Guide or contact Twin Disc directly.  
Ratings shown for use with standard right hand rotation engines. The maximum allowable rated engine speed is 3500 rpm  
(3000 rpm for ratios 0.80:1, 0.92:1, 1.00:1 and 1.16:1).



All product images are representative only.  
Specifications subject to change without prior notice in the interest of continual product improvement.

#### OPTIONAL EQUIPMENT

MG-5075SC/MG-5075A/MG-5075IV

- SAE J617 housing no. 1
- SAE J617 housing no. 2
- SAE J617 housing no. 3
- Flexible coupling for 14" flywheel (SAE J620 size 355)
- Flexible coupling for 11.5" flywheel (SAE J620 size 290)
- Electric control valve (12VDC or 24VDC)
- Mechanical trolling valve
- Oil cooler with thermostatic bypass valve
- Companion flange/bolts set
- Monitoring devices to customer's specification
- Mounting brackets
- Live PTO:
  - SAE J744 size 82-2, 16-4 (SAE "A", 2-bolt) - max. 58 Nm
  - SAE J744 size 101-2/4, 22-4 (SAE "B", 2/4-bolt) - max. 197 Nm
  - SAE J744 size 101-2/4, 25-4 (SAE "B-B", 2/4-bolt) - max. 337 Nm

MG-5075IV ONLY

- Input flange for freestanding installation

#### MG-5075SC

		C	15 mm (0.59")
		S	178 mm (7.00")
		F	373 mm (14.68")
		L	254 mm (10.00")
		R	254 mm (10.00")
		Weight*	123 kg

#### MG-5075A

		C	48 mm (1.91")
		S	178 mm (7.00")
		F	358 mm (14.11")
		L	254 mm (10.00")
		R	254 mm (10.00")
		A	7°
		Weight*	122 kg

#### MG-5075IV

		C	373 mm (14.70")
		S	100 mm (3.93")
		F	71 mm (2.81")
		F1	354 mm (13.94")
		L	254 mm (10.00")
		R	254 mm (10.00")
		A	15°
		Weight*	150 kg

[Sans titre]

Twin Disc, Incorporated reminds users of these products that their safe operation depends on use in compliance with engineering information provided in our product guides, installation/assembly drawings and/or manuals. Users are also reminded that safe operation depends on proper installation, operation and routine maintenance and inspection under prevailing conditions. It is the responsibility of users (and not Twin Disc, Incorporated) to provide and install guards or safety devices which may be required by recognized safety standards or by the Occupational Safety and Health Act of 1970 and its subsequent provisions.

USA • AUSTRALIA • BELGIUM • CHINA • INDIA • ITALY • NETHERLANDS • SINGAPORE • SWITZERLAND

Since 1918, we've been putting horsepower to work by designing, engineering and manufacturing rugged-duty industrial products. Our products and our reputation are bolted to the most renowned engine manufacturers and equipment OEMs in the world. Our mission is to make boats, machines and off-highway vehicles more productive, more durable, more operator-friendly, and more cost-effective. From design and installation consultation through after-sale support, Twin Disc and its distributors are committed to your business. No one knows more about managing horsepower in more ways than Twin Disc.

#### TRANSMISSIONS

ELECTRONIC CONTROLS

EXPRESS JOYSTICK SYSTEM\*

SAILDRIVES

EXPRESS POSITIONING\*

ARNESON® SURFACE DRIVES

MARINE CONTROL DRIVES

ROLLA™ PROPELLERS

THRUSTERS

VETH PROPULSION SYSTEMS

STEERING SYSTEMS

RUDDERS

TRIM TABS

PUMP DRIVES

PTOS



Twin Disc, Incorporated  
Racine, Wisconsin 53403 USA  
Phone +1-262-638-4000  
Fax +1-262-638-4482  
www.twindisc.com

2204\_Bulletin\_MG-5075\_Series  
© 2022, Twin Disc, Incorporated  
Printed in the USA



VALKYRIE 1200 IB 2x550Z VALKYRIE 1200 RAID IB

To the attention of:  
SORIN CUCU  
Sales Representative  
SC MARINE TECHNOLOGIES SRL  
România, Constanta, Navodari, road D10, number 20  
CUI: 48513469  
EUID: ROONRC.J13/2474/2023  
Banca Transilvania RO73BTRLRONCRT0CM7025801  
SWIFT: BTRLRO22  
[www.marinetechnologies.ro](http://www.marinetechnologies.ro)  
+33 (0)674135559  
February 18, 2025  
Valid until 30/4/2025

Twin engine FPT Z DRIVE 2x550 hp	
The "engine" service includes: hydraulic or mechanical steering / engine installation / fuel/water separator bowl(s) / electrical connections / electronic connections / batteries (depending on the connected equipment) / battery coupler with peripherals / electrical and galvanic hull inspections by an expert / sea trials	
Price excluding VAT* VALKYRIE 1200 RAID IB (ex-works) *	€511,068
Prices may vary depending on the cost of raw materials and other accessories	
OPTIONS (excluding VAT) – not included, to be selected	
LOFRANS 1500W windlass with 16kg anchor	€3,100
SE 50 Bow Thruster	€2,300
Economy electronics package: Helix 7 GPS/fishfinder + RT750 AIS VHF radio + antennas	€2,341
Standard electronics package: Helix 9 GPS + RT750 AIS VHF + antennas	€2,812
Medium electronics package: Helix 10 GPS + RT750 AIS VHF + antennas	€3,348
Premium electronics package: Solix 12 GPS + RT1050 AIS VHF + antennas	€5,969
PRO electronics package: Apex 16 GPS + RT1050 AIS VHF + antennas	€7,942
Aluminum Top	€2,500
Sunshade with tarpaulin over passengers	€3,500
Aluminum sheet metal cover over the passengers	€3,800
Alucore honeycomb aluminum awning on the passengers	€4,000
tilting bulwarks	
Passenger and pilot seats	Price upon request
Crystal side fallout	€2,900
Closed wheelhouse with swing door at the rear	€6,500
Standard engine protection	€450
Black delta/omega 80x70 mm defense - price per linear meter	€200
Additional cost Lockable drain	50 €
Restricted maneuvering lights	€500
National flagpole	€100
Logo 500x500 mm	€500
Heat-sealed film on the case	Price upon request
Painting	Price upon request
Non-slip paint deck coating	Price upon request
Special aluminum antifouling	€3,000
Trailer, other fittings, security equipment, transport	Price upon request

Technical specifications and equipment are provided for informational purposes only and may be modified without prior notice from the manufacturer.

Payment terms : 1/3  
upon ordering  
1/3 at the turnaround

Balance due upon departure from the construction site

Check, date and sign:  
ÿOkay for agreement  
ÿI have read and understood the general terms and conditions of sale



# Valkyrie boat

Tel: 02 96 54 18 30 - [laurence.cheynet@bab-boat.com](mailto:laurence.cheynet@bab-boat.com) BORD À

BORD - ALUMINUM SHIPBUILDING SHIPYARD – Chatel Industrial Park – 22310 Plestin-Les-Grèves



SHIPYARD BORD TO BORD

# Who are we ?

Located in Côtes d'Armor, Bord à Bord has been designing and manufacturing aluminum vessels for over 20 years. They offer a range of boats up to 24 meters in length, suitable for various activities, whether for professionals, recreational fishermen, or adventurers.

Passionate about their craft, the experienced boilermakers and welders are involved in every project. They work under an aluminum license, guaranteeing a high-quality boat, within an eco-design framework.

Production monitoring is carried out by regularly sending photos during manufacturing to include clients in the project's progress.





## VISION

We make every effort to enable our recreational boating customers to live their passion and fulfill their dream, and to enable our professional customers to work on safe, high-performance boats adapted to their profession.

## ASSIGNMENT

Our mission is to design and manufacture aluminum boats that meet our clients' specifications and current regulations. Participating in the ecological transition is a point of honor at Bord à Bord, which is why we design environmentally friendly boats .



## PEOPLE FIRST

At Bord à Bord, we firmly believe that actively listening to our customers allows us to constantly improve and innovate to enhance our products. This enables us to offer them the solutions best suited to their businesses. Teamwork is a real asset, both internally and with our many partners.





# SIDE TO SIDE

## IN NUMBERS

**+ 600** Ships on the Water

**2000 m2** workshop

**35** Ships produced per year

**75%** of the turnover in professional boats

**33** Collaborators

**25 to 66%** of turnover outside mainland France depending on the year.

# Our in-house skills



Naval architecture: design and conception



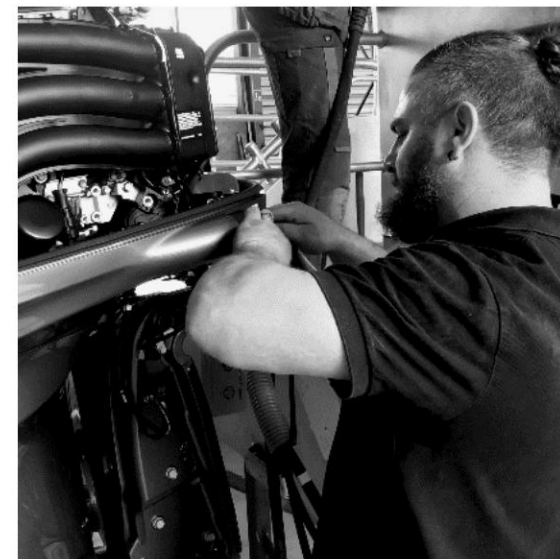
aluminum fabrication



Electromechanical



Design and construction of interior layouts for  
habitable vessels & refit







ALUMINUM



# "Why choose an aluminum boat?"

## QUALITY

Our boats are fully welded using the TIG/MIG protocol, and everyone is involved in ensuring quality control.

## LIFETIME

Aluminium is synonymous with durability; buying an aluminium boat is a long-term investment.

## AESTHETIC

Our boats feature a brushed surface treatment for a refined finish. Numerous options are available to personalize the boat's design.

## ROBUSTNESS

The structure and optimized thickness of the aluminum used in the boat give it strength and durability.

## RESISTANCE

Aluminium offers high resistance to shocks and friction.

## ENVIRONMENT

The aluminum used in manufacturing is composed of 70% recycled aluminum. Aluminum can be recycled up to 98%, confirming our eco-design approach.

## FLAMMABILITY

Safety on board is enhanced by the non-flammable nature of aluminum.

# LE MONDE ET BORD A BORD





# GENERAL TERMS AND CONDITIONS OF SALE 1/2

These general terms and conditions of sale govern all sales of Goods by BORD A BORD to the Buyer. They apply to the contractual relationship between BORD A BORD and any Buyer and constitute the legal basis for all sales that have not been the subject of specific express agreements accepted by both parties.

## ARTICLE 1 - APPLICATION OF THE GENERAL TERMS AND CONDITIONS OF

**SALE** These General Terms and Conditions of Sale (22/04/2020) are systematically sent or given to each buyer to enable them to place an order and apply automatically to all sales of new motorboats or pleasure craft manufactured by BORD A BORD. Consequently, placing an order implies the Buyer's full and unreserved acceptance of these General Terms and Conditions of Sale, to the exclusion of all other documents such as brochures and catalogs issued by the Company or the manufacturer of the Goods, which are for informational purposes only.

**ARTICLE 2 - ORDER - MODIFICATION OF GOODS - DELIVERY** The order is final once the Bord à Bord quote or order form has been accepted and signed by the Buyer. Any modification to the order must be agreed upon in writing by both parties. Any modification will automatically result in a postponement of the initially scheduled delivery date. The sale of the boat will be formalized by a signed delivery note.

**ARTICLE 3 - DATE OF AVAILABILITY AND COLLECTION OF GOODS** The date of availability of the goods is specified in the order form. For personalized goods (subject to options), the availability date is given for informational purposes only. As soon as the Company has carried out the necessary checks with its suppliers, it will inform the buyer and provide a firm date.

The Buyer agrees to take delivery of the goods at the Bord à Bord shipyard (EXW) within 15 days of the availability date indicated on the order form. After this period, Bord à Bord may, at its discretion, cancel the sale without prior notice and dispose of the goods. The deposit paid by the Buyer will remain the property of Bord à Bord.

## ARTICLE 4 – GUARANTEES AND LIABILITIES

### 4.1 COMMERCIAL GUARANTEE

The Buyer benefits from the BORD A BORD commercial guarantee under the following conditions and terms:

The warranty is 1 year on the aluminium structure of the boat in the case of metalwork and installation of accessories for professional boats.

The warranty is 2 years on the aluminum structure of the boat, including metalwork and installation of accessories for pleasure boats.

The warranty is 1 year on accessories - Manufacturer's warranties. The warranty is personal to the Buyer and non-transferable. The warranty applies provided that the usage recommendations indicated in the Owner's Manual are respected.

Any work on the boat without the manufacturer's written authorization will result in the loss of this warranty and possibly legal action.

If the warranty return requires Bord à Bord's intervention, this will be done in their workshop.

In this case, the costs associated with returning the boat to the workshop will be borne by the boat owner.

## 4.2 LEGAL GUARANTEES

If the owner makes any modifications to the goods, they must use a professional or authorized repairer for maintenance, repairs, or the supply of spare parts. Otherwise, the Buyer will lose the benefit of Bord à Bord's legal warranties.

## ARTICLE 5. – PRICE

The selling prices of the Goods are those applicable at the time of signing the quote or order form for series boat models.

The selling prices of the goods may be adjusted at the time of ordering the raw material and other components in the case of custom-made models or models that have been modified by a naval architect.

In the event of significant fluctuations in raw material prices at the time of ordering, an adjustment to the selling price may also take place.

Shipping costs are not fixed; they may be updated at the time of delivery.

Prices are in euros including all taxes (TTC).

However, the costs of launching, launching, handling, packaging, transport, delivery, registration, and customs clearance remain the responsibility of the Buyer. Any tax, duty, fee, or other charge payable under French regulations or those of an importing or transit country is also the Buyer's responsibility.

# GENERAL TERMS AND CONDITIONS OF SALE 2/2

## ARTICLE 6. - PAYMENT 6.1.

### TERMS AND CONDITIONS

Unless otherwise stipulated in our quotes or order forms, the Buyer shall pay a deposit of 30% of the price including VAT upon ordering, the said sum not constituting in any way a down payment.

The goods are delivered by Bord à Bord (ex-works EXW) only upon full payment.

Bord à Bord does not intend to grant any discount for cash payment or payment made before the date resulting from these Terms and Conditions.

### 6.2. DELAY

Any sum not paid by the due date indicated on the quote or order form will automatically incur penalties equal to three times the legal interest rate. In addition to late payment penalties, a fixed fee of €40 will be charged for recovery costs.

## ARTICLE 7 - TRANSFER OF RISKS

### 7.1. TERMS AND CONDITIONS

From the date of delivery of the Goods, including delivery to Bord à Bord's premises, the risks, including loss, theft, deterioration of the Goods or damage caused by these latter, are transferred to the Buyer notwithstanding the retention of title subject of Article 9 below. Therefore, it is the Buyer's responsibility, from the moment of the transfer of risks, to insure the goods sold against theft, fire or any other form of destruction, degradation, accidents, or disappearance. It also belongs to The Buyer is required to take out insurance guaranteeing their civil liability. Bord à Bord se disclaims all penalties for loss of operation following immobilization of the vessel. The client agrees not to recover funds from Bord à Bord beyond the limits of their policy. insurance.

### 7.2. IN THE CONTEXT OF A SALE ABROAD

For sales of goods destined for foreign countries, the transfer of risks and costs will be carried out according to the ICC Incoterm mentioned in the quotation or purchase order, latest version in force at the time the offer was established.

## ARTICLE 8. - RETENTION OF TITLE

The goods remain the property of the company Bord à Bord until full payment of the price.

## ARTICLE 9 – MISCELLANEOUS PROVISIONS

In the event that one or more of the stipulations of these General Terms and Conditions are (in) t if set aside by a legislative or regulatory provision or by a court decision, all other provisions would remain applicable.

## ARTICLE 10. – FORCE MAJEURE

The occurrence of a force majeure event has the effect of suspending the execution of the contractual obligations of the company Bord à Bord à Bord.

Force majeure is defined as any event beyond Bord à Bord's control that prevents its normal operations during the manufacturing or shipping of products. Force majeure events include, but are not limited to, total or partial strikes, strikes by Bord à Bord's suppliers, subcontractors, or carriers, as well as interruptions in transportation, energy supply, raw materials, or spare parts, and pandemics and epidemics.

## ARTICLE 11. – APPLICABLE LAW - JURISDICTION For

all disputes relating to the application of these general terms and conditions of sale or services provided by BORD A BORD, the Commercial Court of Saint-Brieuc shall have sole jurisdiction.





---

## CONTACT Metropolitan France

02 96 54 18 30

Laurence Cheynet: [laurence.cheynet@bab-boat.com](mailto:laurence.cheynet@bab-boat.com) Chatel

Industrial Park – 22310 Plestin-Les-Grèves

