



# FOXSEA® 700



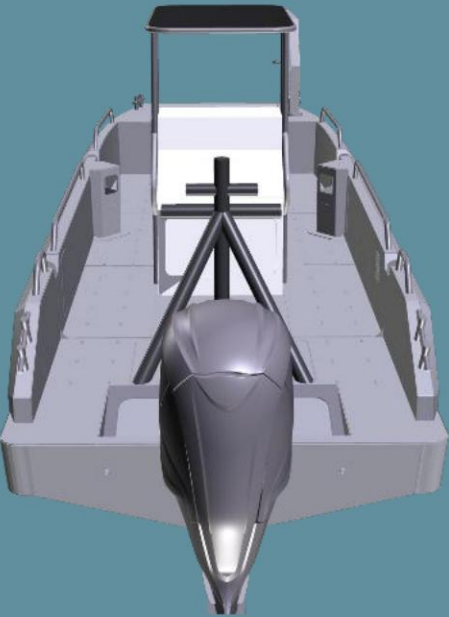
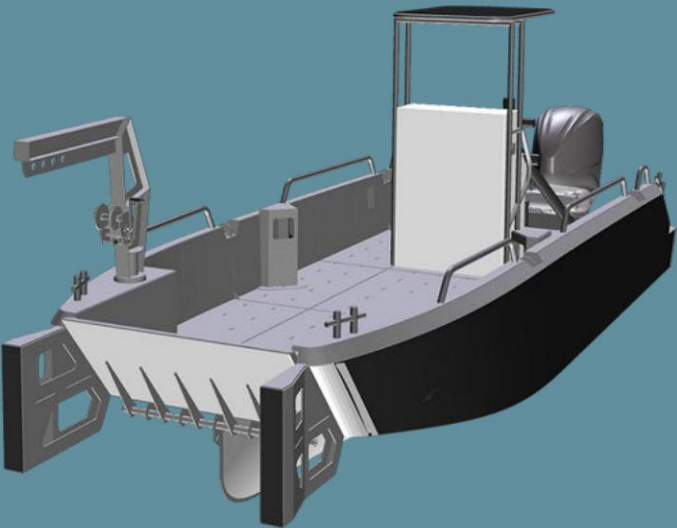


# A versatile work vessel

*The **FOXSEA 700** is a versatile workboat with ample deck space and a payload capacity of 700 kg. Thanks to its aft bittard, it can also tow up to 800 kg. Its V-shaped hull provides excellent seakeeping. Its tilting door allows it to load and unload cargo and personnel from a quay, beach, or slipway. Furthermore, it retains its road-legal dimensions, enabling it to be transported by road to various construction sites.*

# TECHNICAL SPECIFICATIONS

Architect, Works of Art, Naval Architecture



HULL LENGTH	7 m
HULL WIDTH	2.50 m
DRAFT	0.39 m / 0.90 m
MAXIMUM MOTORIZATION	150 hp
RECOMMENDED ENGINE	150 hp
SLIGHT DISPLACEMENT	2,160 kg
MAXIMUM NUMBER OF PEOPLE	6
MAXIMUM LOAD	700 kg
APPROVAL	C6 / DIV 22V / 4th



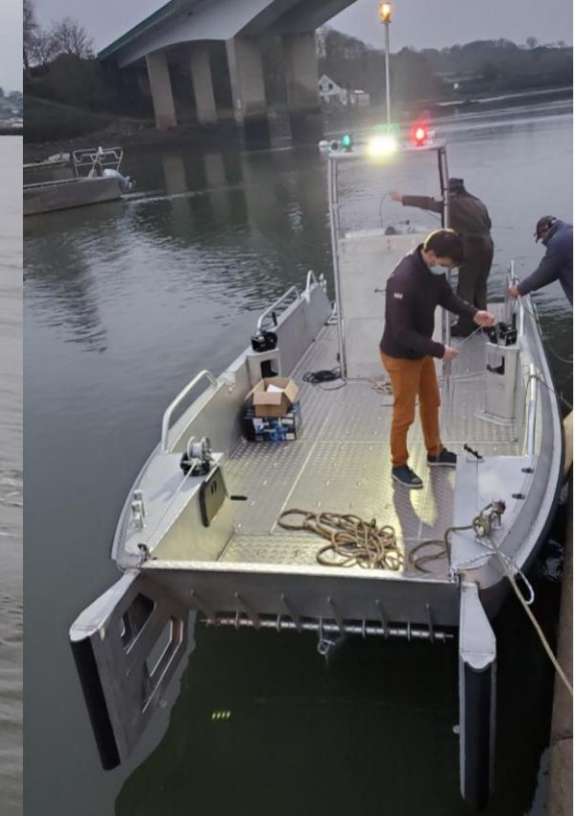


### Sustainability:

Its eco-friendly and environmentally conscious design makes it a responsible choice for the future of diving. Its eco-designed hull is made from aluminum composed of 70% recycled aluminum and is 98% recyclable.

### Customization: The FOXSEA®

700 offers a range of options and accessories to personalize your boat to your needs. Do you require custom fittings, a wrap reflecting your business, etc.? Don't hesitate to contact us; we will work with you to develop your request.



## Standard equipment

- Tilting bow door – Manual winch • Mooring cleat
- Anchor locker • Aluminum console/ Storage/ Handles • Windshield/ T-top • Sit-stand seating • 4 cleats + aluminum railings • 100-liter fuel tank • 4 lifting shackles

- Rear traction bittard (WLL 800kg)
- Anti-slip aluminum deck • Self-bailing • Approval plate -
- Logo • Anode

## Standard electrical equipment

- Double-pole circuit breaker
- Battery •
- Compass •
- Waterproof electrical panel •
- Cigarette lighter sockets •
- Deck spotlight • Regulatory lights
- Audible warning

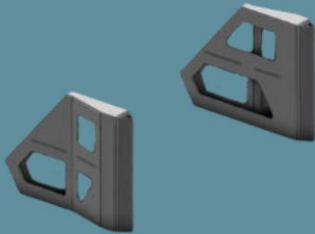
# FOXSEA RANGE – OPTIONS



Traction mast  
CMU 800 Kg



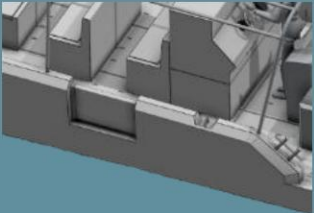
Front gantry  
CMU 300 Kg



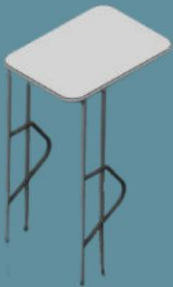
Pushing front



Jib crane with manual winch  
CMU 150 Kg



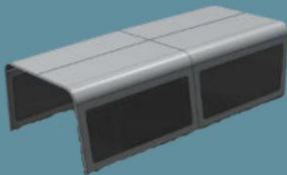
Swinging doors in  
flagpoles



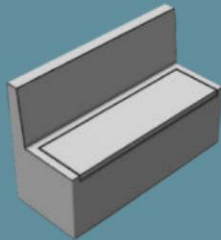
Aluminum top on console



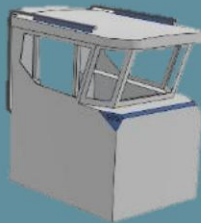
Tarpaulin or aluminum  
awning on passengers



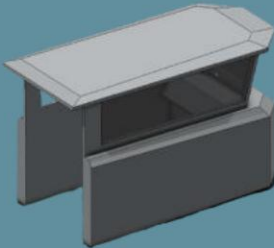
Tarpaulin awning with  
crystal overhangs



3-seater storage bench



short open wheelhouse  
Starting with the F800



Long open wheelhouse  
Starting with the F900

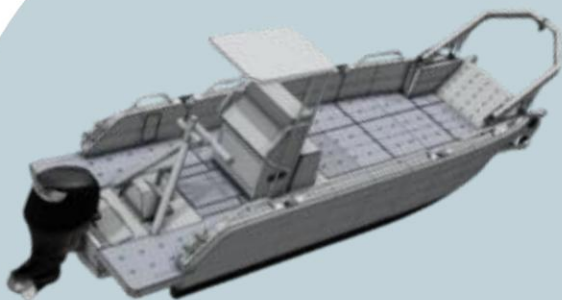


# FOXSEA RANGE

FOXSEA®	660	700	800	900	1000
Material	5083 Aluminum	5083 Aluminum	5083 Aluminum	5083 Aluminum	5083 Aluminum
Hull length (excluding thrust front)	6.6 m	7 m	8 m	9 m	10 m
Overall length (without a pushing front)	6.70 m	7.71 m	8.70 m	9.9 m	11 m
Maximum bau	2.3 m	2.50 m	2.85 m	3.2 m	3.5 m
Recommended power	150 hp	200 hp	300 hp	400 hp	500 hp
Maximum power	350 hp	400 hp	600 hp	600 hp	800 hp
Passengers	6	6	16	20	24
Load on deck	450 kg and 6 passengers (75 kg/passengers)	1150 kg or 6 passengers (75 kg/passenger) + 700 kg	1200 kg max including up to 16 passengers (75 kg / passenger)	1500 kg max including up to 20 passengers (75 kg / passenger)	1900 kg max including up to 24 passengers (75 kg / passenger)
Lightweight	1,500 kg	2,160 kg	2,400 kg	2,700 kg	3000 kg
Maximum loaded draft	0.353 / with motor 0.741 m	0.897 m (motor)	0.435m / 0.823m (engine)	0.463m / 0.851m (engine)	0.480m / 0.9m (motor)
Design category	CE -C6/ div.222/4 €70,000	CE - C6/div.222/4	CE - C16/div.222/4 €119,500	CE - C20/ div.222/3	CE - C24/ div.222/3 €162,000

# FOXSEA RANGE VIDEOS

Foxsea 700



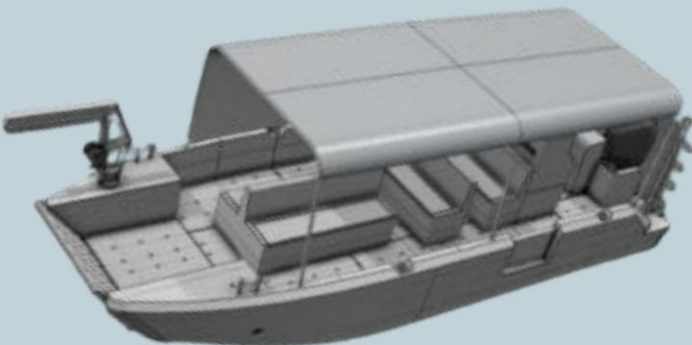
<https://youtu.be/ubhN-E9F0i8?si=byshK4hrFoiGfrpH>  
[https://youtu.be/1jipqlzM\\_ps?si=VFElum0jxshMJX5](https://youtu.be/1jipqlzM_ps?si=VFElum0jxshMJX5)

Foxsea 660



[https://youtu.be/JRid0xtQ6XI?si=BI12VdcKBxDL\\_xgy](https://youtu.be/JRid0xtQ6XI?si=BI12VdcKBxDL_xgy)  
<https://youtu.be/tCR2yl--J8U?si=OEwJK4GWmMnvWrWi>  
[https://youtu.be/LtPHhjqcKZU?si=\\_CiL9NaCaWBEc0Xb](https://youtu.be/LtPHhjqcKZU?si=_CiL9NaCaWBEc0Xb)  
<https://youtu.be/iJXA1142V9A?si=AUV4HlzYuMhndEKL>

Foxsea 800



<https://youtu.be/wfcyijFYe1o?si=GGIV4OJHz4knl8iW> <https://youtu.be/nF5TL0X9gFE?si=WoDU6RioILZ1IXR5> <https://youtu.be/9bdKa94YI2M?si=5ZhjpeX1nSk5zNXz>



## Frequently Asked Questions

### ***"With its flat bow, will the ship slam into the waves?"***

FOXSEA boats were designed so that the forward door hinge is well above the waterline to prevent the boat from slamming into the waves. Our FOXSEA 800 sails daily in the Irish Sea, a rather...challenging area.

### ***"Does the front door leak water? Is the deck constantly wet?"***

No, the front door doesn't let water in, as it's well above the waterline. Furthermore, the door is designed to allow water to flow from the deck to the sea (for cleaning, etc.), but not the other way around.

### ***"Can several people walk, park, or transport freight through the front door?"***

Yes! It's designed for that! All doors are designed according to BV regulations and are verified by finite element calculation.

### ***"Can we dive from the front door?"***

Yes, without any problem, we can design an adaptable diving ladder or the front door can be used as a diving board.

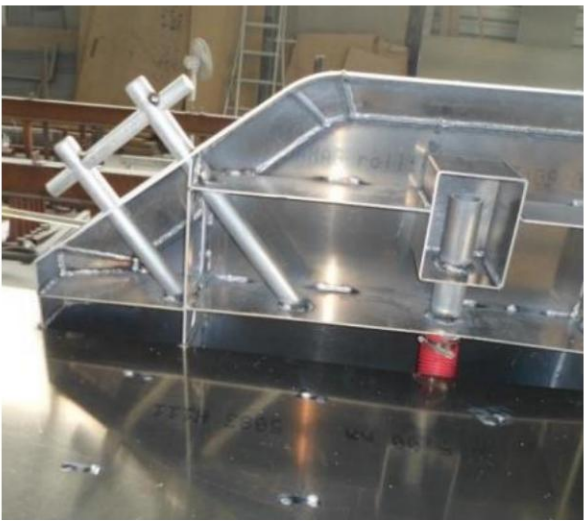
### ***"Can the ship beach itself?"***

Yes, Foxsea boats are designed to fail; it is a primary function of their design brief.





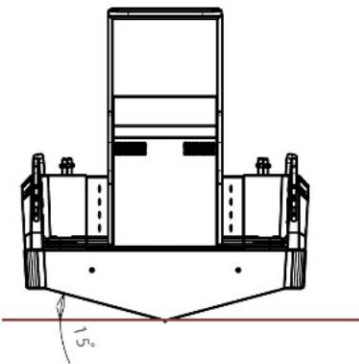
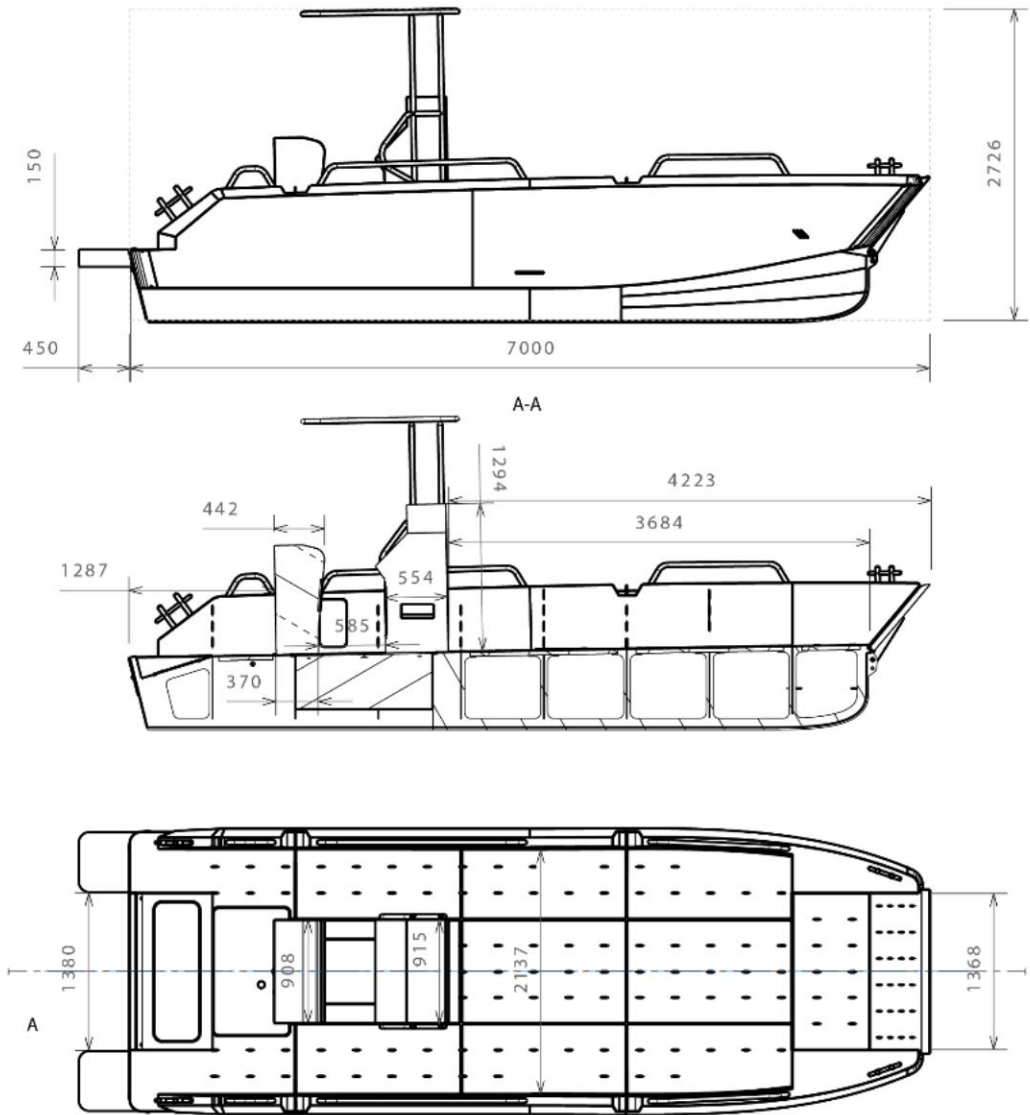
# FOXSEA RANGE UNDER CONSTRUCTION



# FOXSEA® 700

General plan (for guidance purposes only)

A general plan and 3D views will be provided for validation by the shipowner before production begins.



Caractéristiques FOXSEA 700 N4	
Longueur hors tout	dépend de la motorisation
Largeur hors tout	2.5 m
Longueur de coque	7 m
Creux	0.615
Tirant d'eau charge	dépend du parc batterie + motorisation
Tirant d'eau léger armé	dépend du parc batterie + motorisation
Motorisation installée	motorisation électrique à la charge du client
Motorisation max	motorisation électrique à la charge du client
Nombres de passagers	dépend de la réglementation appliqué et masse motorisation
Les caractéristiques du navire sont prévisionnelles et pourront être modifiées suivant les choix du client, du chantier ou des contraintes réglementaires	



Oeuvres Vives Architecture Navale  
bâtiment Socrate  
23 Boulevard Victor Hugo  
31770 Colomiers



Navire:	FOXSEA 700 N4
Titre:	général
Type :	1 plan d'ensemble FOXSEA 700

fait par:	andre	échelle:	1:40	date approbation client:	
date:	19/07/2024	format:	A4	signature client:	
feuille:	1	1	revision:		



# FOXSEA® 700 – PRICES & OPTIONS

As described above

Business  
Name Surname  
E-mail  
Phone  
Date

Price excluding VAT\* FOXSEA 700

**YAMAHA 150 hp engine**

*The "engine" service includes: hydraulic or mechanical steering / engine installation / fuel/ water separator bowl(s) / electrical connections / electronic connections / batteries (depending on the connected equipment) / battery coupler with peripherals / electrical and galvanic hull inspections by an expert / sea trials*

**Price excluding VAT\* FOXSEA 700 (ex-works)**

**€89,000**

**OPTIONS (excluding VAT) – not included, to be selected**

IB engine + hydrojet	Price upon request
Division 222 approval with Bureau Veritas structural certification	Price upon request
Support from our design office for homologation in division 222	€2,500
River certification	Price upon request
NUC module A1 approval (subject to other CSN requirements)	€3,500
NUC module G or B approval	€6,500
Support from our design office for NUC homologation	€2,500
Support from our design office for river certification	€2,500
Safety equipment – based on the shipowner's risk analysis plan validated by the CSN	Price upon
Aluminum Top	request: €1,950
150 kg load capacity jib crane with stainless steel winch	€2,500
Front lifting gantry (can be dismantled) 300 kg (excluding SOCOTEC control)	€2,500
Winch support in front of the base (winch not included)	€980
Pushing front	€1,950
Emergency motor chair	€550
Gate in the shields	€660
Rear security door	€550
Standard engine protection	€450
Black delta/omega 80x70 mm defense - price per linear meter	€200

*Technical specifications and equipment are provided for informational purposes only and may be modified without prior notice from the manufacturer.*

*Technical specifications and equipment are provided for informational purposes only and may be modified without prior notice from the manufacturer.*

**Payment terms : 1/3**

upon ordering, 1/3 upon  
return.

Balance due upon departure from the construction site

**Tick :**

☒ Okay, agreed

☒ I have read and understood the general terms and conditions of sale

Date and sign

# FOXSEA® 700 – PRICES & OPTIONS

## As described above

Business  
Name Surname  
E-mail  
Phone  
Date

Economy electronics package: Helix 7 GPS/fishfinder + RT750 AIS VHF radio + antennas	€2,341
Standard electronics package: Helix 9 GPS + RT750 AIS VHF + antennas	€2,812
Medium electronics package: Helix 10 GPS + RT750 AIS VHF + antennas	€3,348
Premium electronics package: Solix 12 GPS + RT1050 AIS VHF + antennas	€5,969
PRO electronics package: Apex 16 GPS + RT1050 AIS VHF + antennas	€7,942
1000W/12V windlass with accessories and mounting	€2,300
Sunshade with tarpaulin over passengers	€2,000
Aluminum sheet metal cover over the passengers	€2,500
Additional cost Lockable drain	50 €
Custom-made additional handrails - price per linear meter	€25
Removable handrails - price per linear meter	€250
Logo 500x500 mm	€500
Solid white paint	Price upon request
Heat-sealed film on the case	Price upon request
Non-slip paint deck coating	Price upon request
Seadek - price per m² including installation	€250
Flexiteek - price per m² including installation	€450
Single-color upholstery for a 2-passenger bench	€575
Single-color upholstery for a 3-passenger bench	€850
Special aluminum antifouling	€2,200
MTX2802F Trailer	€6,200
Trailer, other fittings, transport	Price upon request
Modification for 8+1 passengers (Bridge extension to increase volume for stability)	€2,000
Modification for 10+1 passengers (Deck extension and hull volume modification for stability)	€5,500
Bench with 2 x 5 seats along the gunwales without upholstery	€1500

Technical specifications and equipment are provided for informational purposes only and may be modified without prior notice from the manufacturer.

**Payment terms :** 1/3  
upon ordering, 1/3  
upon return.

Balance due upon departure from the construction site

**Tick :**

☑ Okay, agreed

☑ I have read and understood the general terms and conditions of sale

Date and sign



Unsinkable aluminum  
Customizable ships

# Who are we ?

Bord à Bord is an aluminum shipyard renowned for its expertise and know-how for over 20 years (established in 2001). With the takeover of the shipyard in 2019, Loïc and Laurence Cheynet are revitalizing Bord à Bord with the aim of developing new boat models tailored to customer needs.

Indeed, Bord à bord offers a range of aluminum boats up to 24 meters for professionals, recreational boaters, and adventurers passionate about the marine world. Each new build is a unique project, designed according to the client's needs with precise specifications.

Passionate about their craft, our teams of boilermakers, welders, electromechanical technicians, carpenters, architects, engineers, and naval technicians are involved in every project to design, manufacture, and customize high-quality boats, 100% made in France and Brittany. Shortest possible supply chains and an eco-design approach demonstrate our daily commitment to sustainable products.

In order to involve the client more in the heart of the construction process, production monitoring is regularly established by sending photos of the different stages of construction of the boat.

<https://bord-a-bord-boat.com/>







## VISION

We make every effort to enable our recreational boating customers to live their passion and fulfill their dream, and to enable our professional customers to work on safe, high-performance boats adapted to their profession.

## ASSIGNMENT

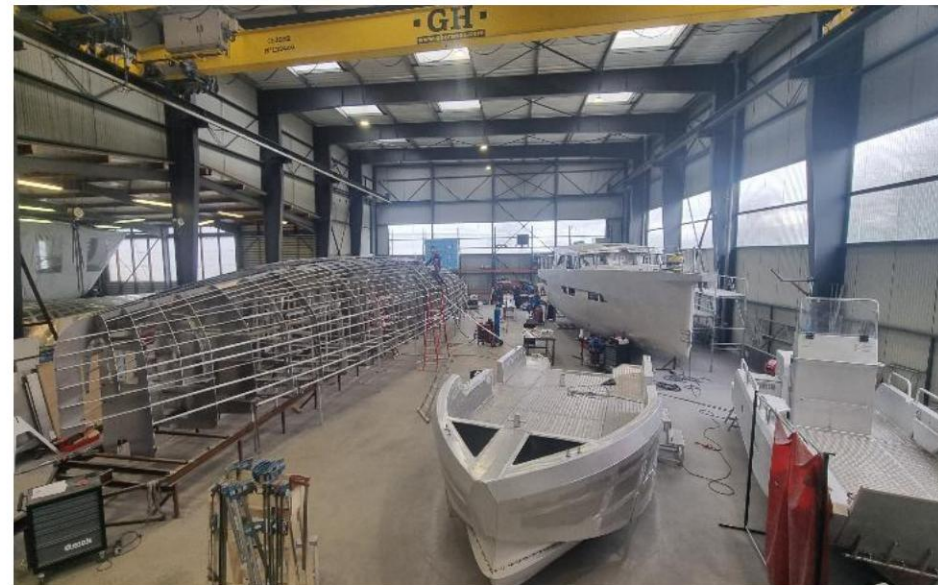
Our mission is to design and manufacture aluminum boats that meet our clients' specifications and current regulations. Participating in the ecological transition is a point of honor at Bord à Bord, which is why we design environmentally friendly boats.

## PEOPLE FIRST

At Bord à Bord, we firmly believe that actively listening to our customers allows us to constantly improve and innovate to enhance our products. This enables us to offer them the solutions best suited to their businesses. Teamwork is a real asset, both internally and with our many partners.







# Band **Armor Marine** International

## IN NUMBERS

**+600** ships on the water

**35** ships from 4 to 24 m produced per year

**37** employees

**G2+** rating Bank of France

**2,000 m2** workshop

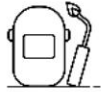
**70%** of revenue from professional boats

**25 to 66%** of revenue outside mainland France, depending on the year

# Our in-house skills



Naval architecture: design and conception



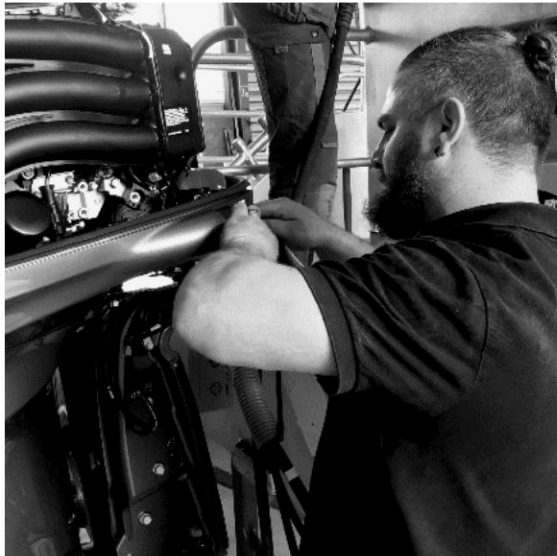
aluminum fabrication



Electromechanical



Design and construction of interior layouts for  
habitable vessels & refit







# "Why choose an aluminum boat?"

## QUALITY

Our boats are fully welded using the TIG/MIG protocol, and everyone is involved in ensuring quality control.

## LIFETIME

Aluminium is synonymous with durability; buying an aluminium boat is a long-term investment.

## AESTHETIC

Our boats feature a brushed surface treatment for a refined finish. Numerous options are available to personalize the boat's design.

## ROBUSTNESS

The structure and optimized thickness of the aluminum used in the boat give it strength and durability.

## RESISTANCE

Aluminium offers high resistance to shocks and friction.

## ENVIRONMENT

The aluminum used in manufacturing is composed of 70% recycled aluminum. Aluminum can be recycled up to 98%, confirming our eco-friendly approach.

design.

## UNSINKABILITY

All our professional vessels and boats are of unsinkable design

## FLAMMABILITY

Safety on board is enhanced by the non-flammable nature of aluminum.

# Armor Marine Group

International

## Amarès - Guimaëc (29)

*Aluminum shipbuilding workshop*

## Bord à Bord - Plestin les Grèves (22)

- *Aluminum shipbuilding workshop*
- *Electromechanical workshop*
- *Interior design and carpentry workshop*
- *Design office*
- *Seat*

## Occitanie Marine Engineering Living Works® - Colomiers (31)

*Naval architecture design office*

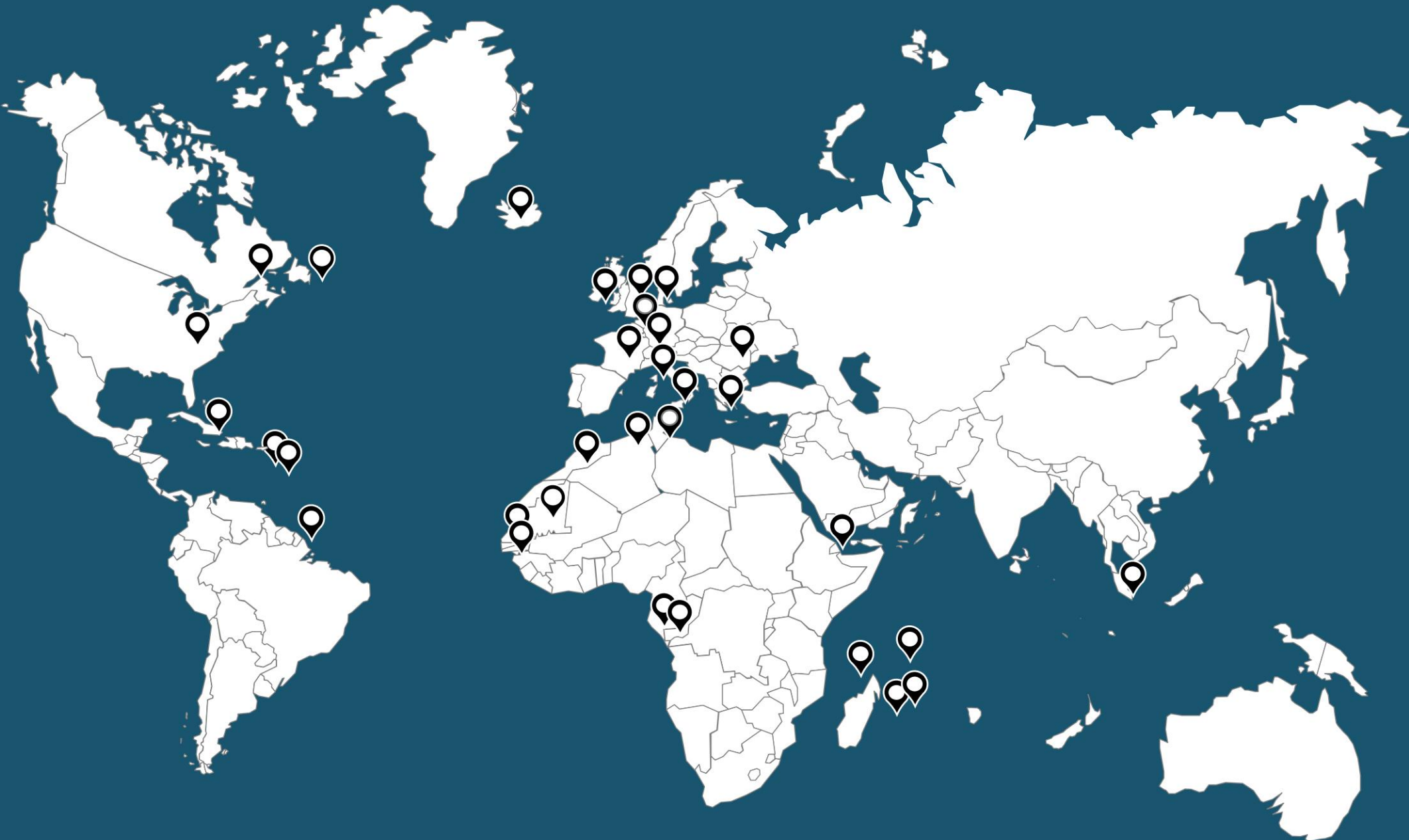


# SOME REFERENCES





# BOATS SIDE BY SIDE AROUND THE WORLD



# GENERAL TERMS AND CONDITIONS OF SALE 1/2

These general terms and conditions of sale govern all sales of Goods by BORD A BORD to the Buyer. They apply to the contractual relationship between BORD A BORD and any Buyer and constitute the legal basis for all sales that have not been the subject of specific express agreements accepted by both parties.

## ARTICLE 1 - APPLICATION OF THE GENERAL TERMS AND CONDITIONS OF SALE These

General Terms and Conditions of Sale (22/04/2020) are systematically sent or given to each buyer to enable them to place an order and apply automatically to all sales of new motorboats or pleasure craft manufactured by BORD A BORD. Consequently, placing an order implies the Buyer's full and unreserved acceptance of these General Terms and Conditions of Sale, to the exclusion of all other documents such as brochures and catalogs issued by the Company or the manufacturer of the Goods, which are for informational purposes only.

**ARTICLE 2 - ORDER - MODIFICATION OF GOODS - DELIVERY** The order is final once the Bord à Bord quote or order form has been accepted and signed by the Buyer. Any modification to the order must be agreed upon in writing by both parties. Any modification will automatically result in a postponement of the initially scheduled delivery date. The sale of the boat will be formalized by a signed delivery note.

**ARTICLE 3 - DATE OF AVAILABILITY AND COLLECTION OF GOODS** The date of availability of the goods is specified in the order form. For personalized goods (subject to options), the availability date is given for informational purposes only. As soon as the Company has carried out the necessary checks with its suppliers, it will inform the buyer and provide a firm date.

The Buyer agrees to take delivery of the goods at the Bord à Bord shipyard (EXW) within 15 days of the availability date indicated on the order form. After this period, Bord à Bord may, at its discretion, cancel the sale without prior notice and dispose of the goods. The deposit paid by the Buyer will remain the property of Bord à Bord.

## ARTICLE 4 – GUARANTEES AND LIABILITIES

### 4.1 COMMERCIAL WARRANTY

The Buyer benefits from the BORD A BORD commercial guarantee under the following conditions and terms:

The warranty is 1 year on the aluminium structure of the boat in the case of metalwork and installation of accessories for professional boats.

The warranty is 2 years on the aluminum structure of the boat, including metalwork and installation of accessories for pleasure boats.

The warranty is 1 year on accessories - Manufacturer's warranties. The warranty is personal to the Buyer and non-transferable. The warranty applies provided that the usage recommendations indicated in the Owner's Manual are respected.

Any work on the boat without the manufacturer's written authorization will result in the loss of this warranty and possibly legal action.

If the warranty return requires Bord à Bord's intervention, this will be done in their workshop.

In this case, the costs associated with returning the boat to the workshop will be borne by the boat owner.

### 4.2 LEGAL GUARANTEES If the

owner makes any modifications to the goods, they must use a professional or authorized repairer for maintenance, repairs, or the supply of spare parts. Otherwise, the Buyer will lose the benefit of Bord à Bord's legal guarantees.

## ARTICLE 5. – PRICE The

selling prices of the Goods are those applicable at the time of signing the quote or order form for series boat models.

The selling prices of the goods may be adjusted at the time of ordering the raw material and other components in the case of custom-made models or models that have been modified by a naval architect.

In the case of specific requests from Maritime Affairs, certification bodies, classification bodies, maritime or river experts or other authorities, during or after construction, additional costs could generate a price increase.

In the event of significant price fluctuations of +/-5% of raw materials or components at the time of ordering them, an adjustment of the selling price may also take place.

Shipping costs are not fixed; they may be updated at the time of delivery.

Prices are quoted in euros excluding VAT.

However, the costs of launching, launching, handling, packaging, transport, delivery, storage, registration, and customs clearance remain the responsibility of the Buyer. Any tax, duty, fee, or other charge payable under French regulations or those of an importing or transit country is also the Buyer's responsibility.



# GENERAL TERMS AND CONDITIONS OF SALE 2/2

## ARTICLE 6. - PAYMENT 6.1.

### TERMS AND CONDITIONS

Unless otherwise stipulated in our quotes or order forms, the Buyer shall pay a deposit of 30% of the price including VAT upon ordering, the said sum not constituting in any way a down payment.

The goods are delivered by Bord à Bord (ex-works EXW) only upon full payment.

Bord à Bord does not intend to grant any discount for cash payment or payment made before the date resulting from these Terms and Conditions.

### 6.2. DELAY

Any sum not paid by the due date indicated on the quote or order form will automatically incur penalties equal to three times the legal interest rate. In addition to late payment penalties, a fixed fee of €40 will be charged for recovery costs.

## ARTICLE 7 - TRANSFER OF RISKS

### 7.1. TERMS AND CONDITIONS

From the date of delivery of the Goods, including delivery to Bord à Bord's premises, the risks, including loss, theft, deterioration of the Goods or damage caused by these latter, are transferred to the Buyer notwithstanding the retention of title subject of Article 9 below. Therefore, it is the Buyer's responsibility, from the moment of the transfer of risks, to insure the goods sold against theft, fire or any other form of destruction, degradation, accidents, or disappearance. It also belongs to The Buyer is required to take out insurance guaranteeing their civil liability. Bord à Bord se disclaims all penalties for loss of operation following immobilization of the vessel. The client agrees not to recover funds from Bord à Bord beyond the limits of their policy. insurance.

### 7.2. IN THE CONTEXT OF A SALE ABROAD

For sales of goods destined for foreign countries, the transfer of risks and costs will be carried out according to the ICC Incoterm mentioned in the quotation or purchase order, latest version in force at the time the offer was established.

## ARTICLE 8. - RETENTION OF TITLE

The goods remain the property of the company Bord à Bord until full payment of the price.

## ARTICLE 9 – MISCELLANEOUS PROVISIONS

In the event that one or more of the stipulations of these General Terms and Conditions are (in) t if set aside by a legislative or regulatory provision or by a court decision, all other provisions would remain applicable.

## ARTICLE 10. – FORCE MAJEURE

The occurrence of a force majeure event has the effect of suspending the execution of the contractual obligations of the company Bord à Bord à Bord.

Force majeure is defined as any event beyond Bord à Bord's control that prevents its normal operations during the manufacturing or shipping of products. Force majeure events include, but are not limited to, total or partial strikes, strikes by Bord à Bord's suppliers, subcontractors, or carriers, as well as interruptions in transportation, energy supply, raw materials, or spare parts, and pandemics and epidemics.

## ARTICLE 11. – APPLICABLE LAW - JURISDICTION For

all disputes relating to the application of these general terms and conditions of sale or services provided by BORD A BORD, the Commercial Court of Saint-Brieuc shall have sole jurisdiction.