



FOXSEA® 800

BORD A BORD - 02 96 54 18 30 – www.bord-a-bord-boat.com



A versatile, adaptable boat a sus necesidades

*The **FOXSEA® 800** is an aluminum boat with capacity for 12 passengers and 2 pilots. The bar is equipped with a hinged door that allows access to poorly equipped areas or with few installations. This door allows you to embark and unload materials and people, but you can also work with the door to allow you to embark and carry various equipment. Before the boat you also have access side doors. The driving position is raised to optimize visibility. You have provided a seat with a safe for the pilot, as well as an amplio banco trasero. We offer the option of retractable benches to provide ample storage space for the transport of cargo to other users. The motorization adapts to use.*

TECHNICAL CHARACTERISTICS

Arquitecto Œuvres Vives Naval Architecture

ESLORA DEL CASCO	8 m
ANCHO DEL CASCO	2.85 m
CALADO	0.34 m
MOTORIZACIÓN MÁXIMA	300 HP
RECOMMENDED MOTORIZACIÓN	2x150 HP
DESPLAZAMIENTO EN VACÍO	2775 kg
MAXIMUM NUMBER OF PEOPLE	13
MAXIMUM CARGO	1200 kg
APPROVAL	C16 - NUC C12+1 - Div. 222/4ª





Standard equipment

• Manually tiltable door • 4 lifting padlocks •
Aluminum pilot console •
Aluminum pilot seat • Trasero box
• Anchor box • 1 side door with
safe edge

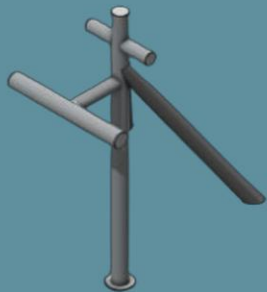
• 2 benches for 3 steps with safe storage • 4
mooring bolts • Anti-slip
aluminum cube • Corona locks • Fire
extinguishers

• 2 deposits of 150 liters

Standard electrical equipment

• Bipolar switch •
Brújula •
Cuadro eléctrico estanco •
Enchufes para encendedor •
Navigation lights • 2
LED projectors

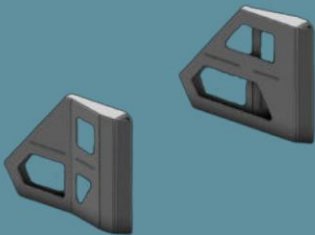
GAMA FOXSEA – OPTIONS



CMU 800 kg traction machine



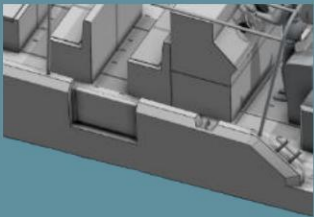
Portico delantero
CMU 300 kg



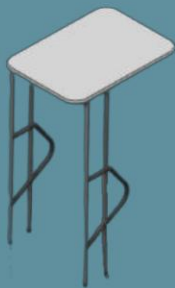
Empuje front



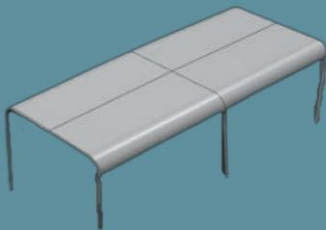
Portico with cabrestante manual
CMU 150 kg



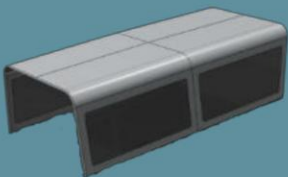
Puertas batientes en
baluarte



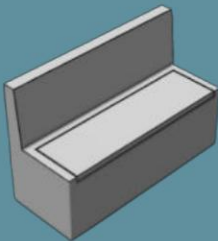
Tope de aluminio sobre
consola



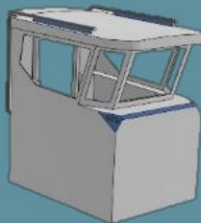
Lona o
aluminum on passengers



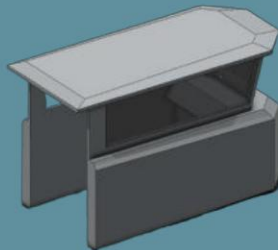
Lona de lona con
crystal salients



Banco baúl de 3 plazas



Timonera abierta corta
Starting from the F800



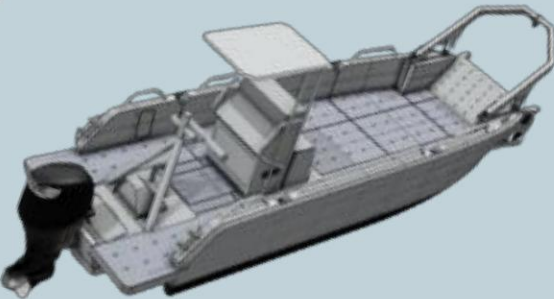
Timonera abierta larga
Starting from the F900

GAMA FOXSEA

FOXSEA®	660	700	800	900	1000
Material	5083 Aluminum	5083 Aluminum	5083 Aluminum	5083 Aluminum	5083 Aluminum
Longitud del casco (sin frente de empuje)	6.6 m	7 m	8 m	9 m	10 m
Total length (since parte delantera de empuje)	6.70 m	7.71 m	8.70 m	9.9 m	11 m
Manga máxima	2.3 m	2.50 m	2.85 m	3.2 m	3.5 m
Recommended potency	150 HP	200 HP	300 HP	400 HP	500 HP
Maximum potency	350 HP	400 HP	600 HP	600 HP	800 HP
Passengers	6	6	16	20	24
Loaded in cover	450 kg and 6 passengers (75 kg/passenger)	1150 kg or 6 passengers (75 kg/passenger) + 700 kg	1200 kg max. including up to 16 steps (75 kg / step)	1500 kg max. including up to 20 steps (75 kg / step)	1900 kg max. including up to 24 steps (75 kg / step)
Peso en vacío	1500 kg	2160 kg	2400 kg	2700 kg	3000 kg
Calado con carga máxima	0.353 / with motor 0.741 m	0.387 m / 0.897 m (motor)	0.435 m / 0.823 m (motor)	0.463 m / 0.851 m (motor)	0.480 m / 0.9 m (motor)
Diseño category	CE -C6/ div.222/4	CE - C6/div.222/4	CE - C16/div.222/4	CE - C20/ div.222/3	CE - C24/ div.222/3
	€70,000		€119,500		€162,000

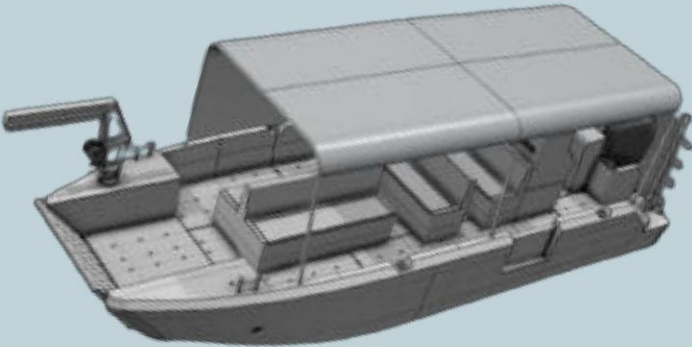
FOXSEA RANGE VIDEOS

Foxsea 700



<https://youtu.be/ubhN-E9E0i8?si=byshK4hrFaiGlrpH>
https://youtu.be/1jipqizM_ps?si=VFElyum0jxshMJX5

Foxsea 800



<https://youtu.be/wfcyijFYe1o?si=GGIV4OJHz4knl8iW>
<https://youtu.be/nF5TL0X9gFE?si=WoDU6RioLLZ1IXR5>
<https://youtu.be/9bdKa94YI2M?si=5Zhjpex1nSk5zNXz>

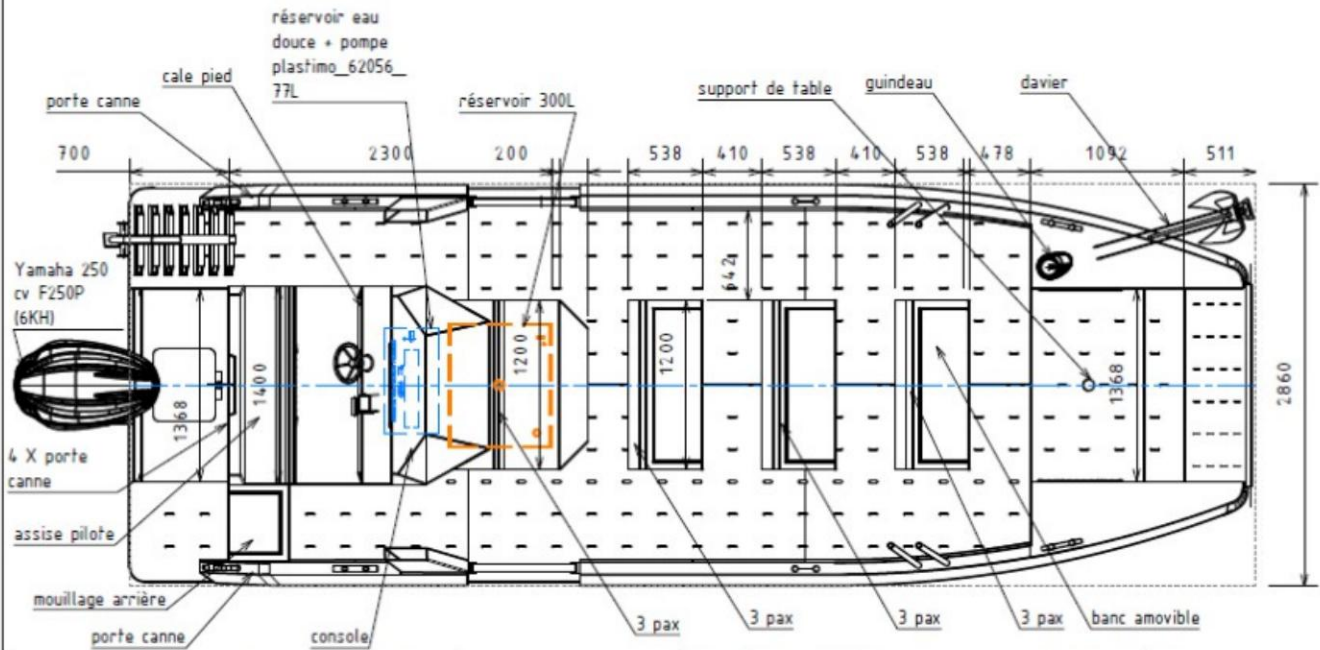
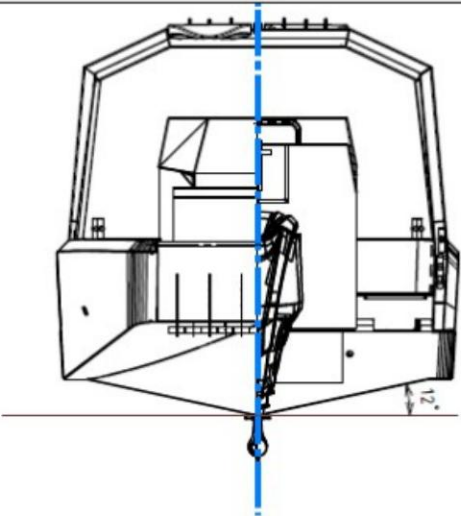
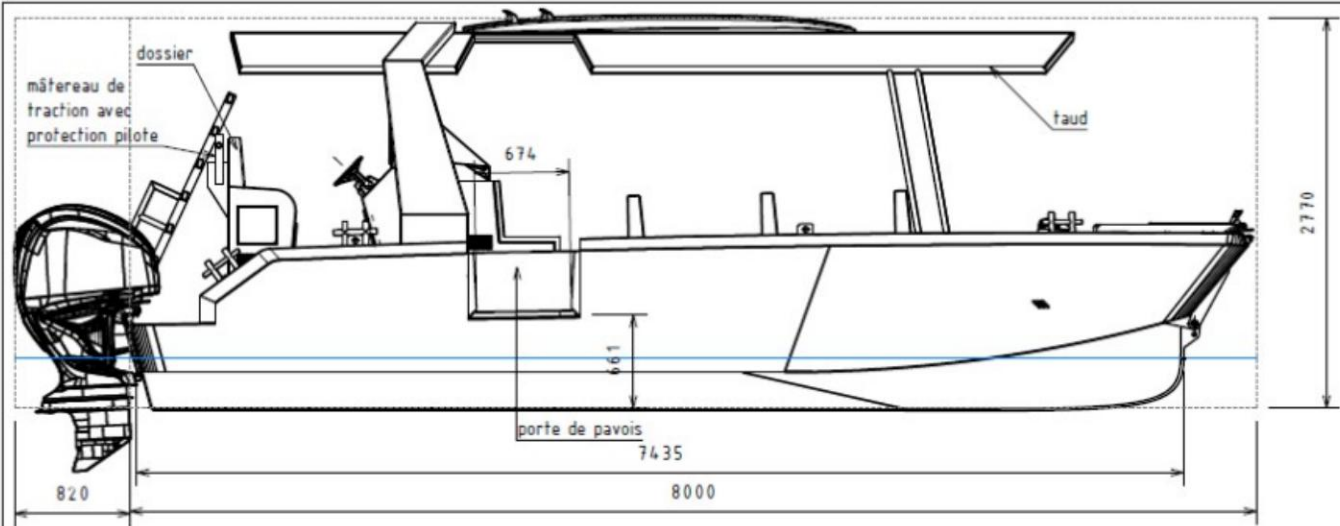
Foxsea 660



https://youtu.be/JRid0xtQ6XI?si=BH12VdckBxDL_xqy
<https://youtu.be/tCR2yl~J8U?si=OEwJK4GWmMnvWwWi>
<https://youtu.be/LtPHhqeKZU9si=OIL9NeGawDEcoXbhttps://youtu.be/UXAi142V9A7si=AUV4HizYuMhndEKL>

FOXSEA® 800

General plan
A título indicativo



Caractéristiques techniques
FOXSEA 800 N3

Longueur de coque	8 m
Largueur hors tout	2,86 m
Creux	0,66
Deplacement léger armé 250 cv + sécurité	2400 Kg
Deplacement charge (100% carburant +12 passagers)	4430 Kg
Tirant d'eau charge	0,550 m
Motorisation	YAMAHA 250 cv
Réservoir essence	300 l
Règlementation plaisance	NUC C 12 pax
Approbation plaisance	Norme CE
Jauge brute	2,10 UMS

 Oeuvre Vives Architecture Navale
bâtiment Socrate
23 Boulevard Victor Hugo
31770 Colomiers

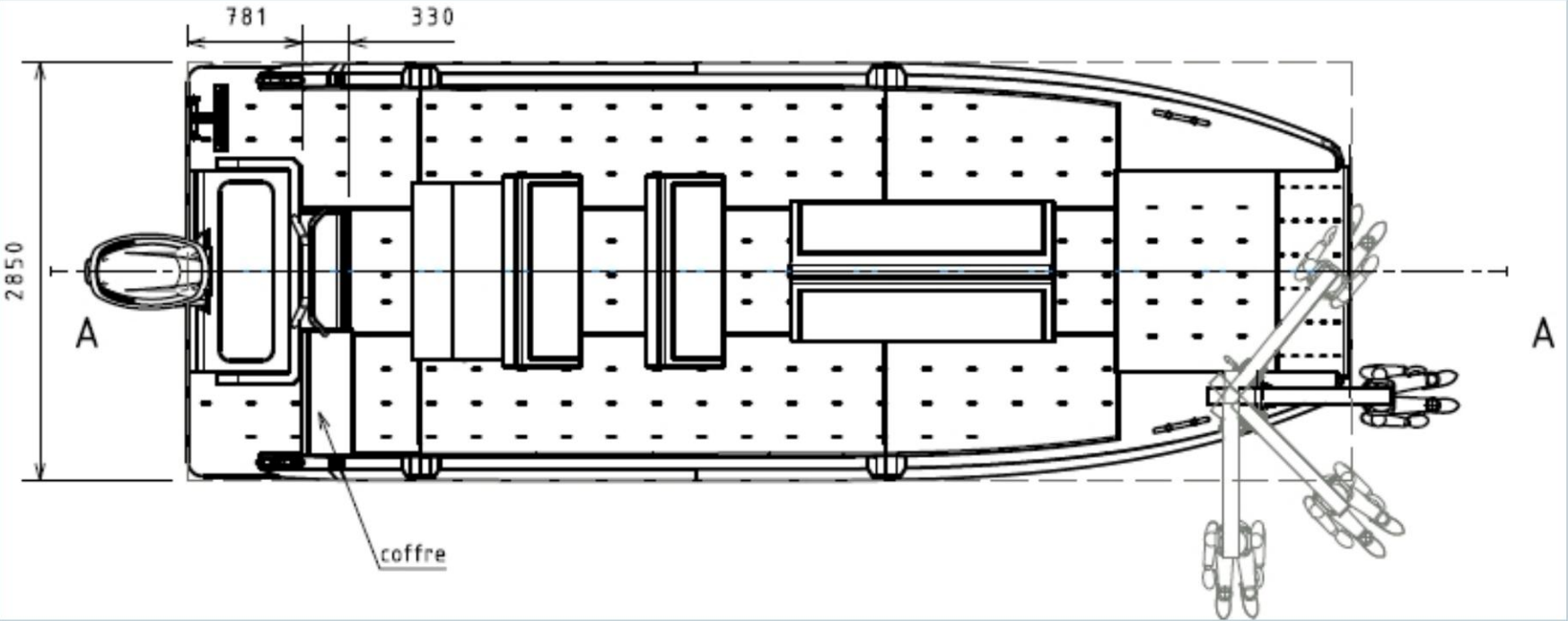
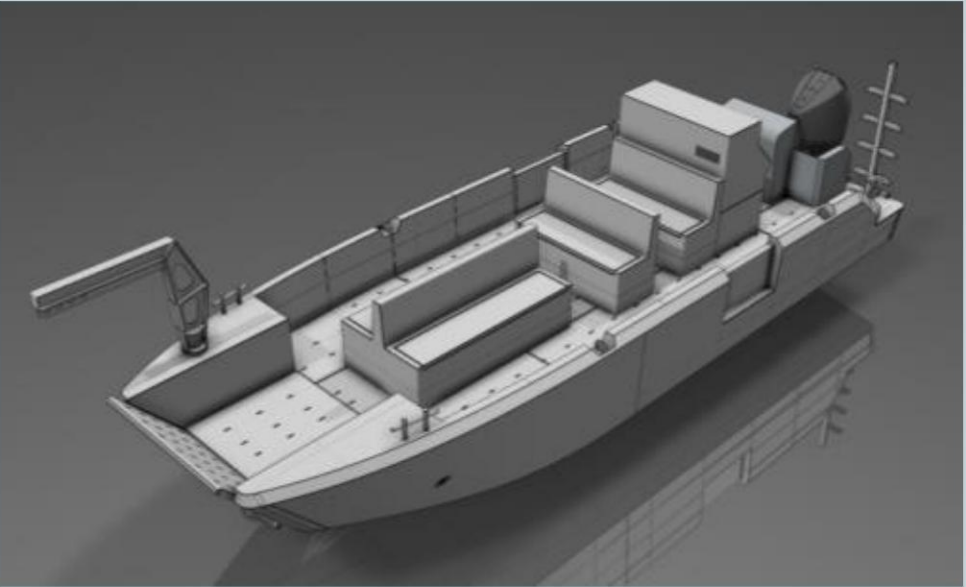
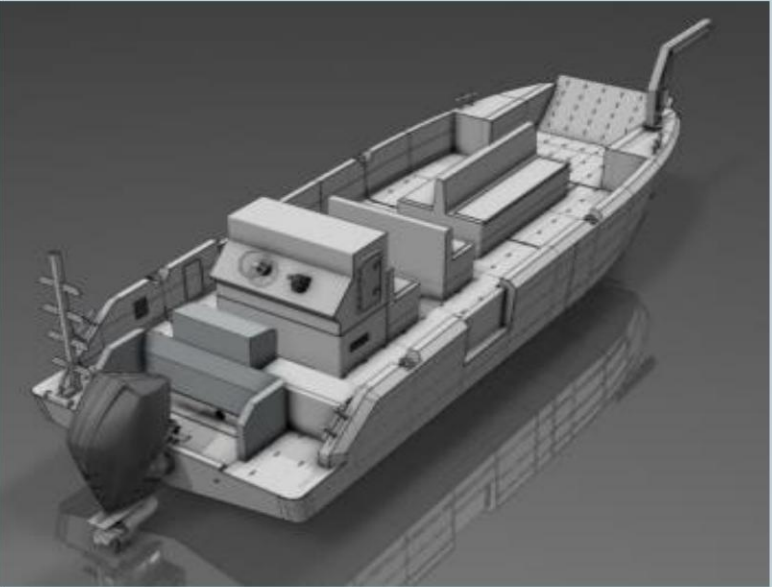
 Bord & Bord

Navire: Foxsea 800 N3
Titre: général
Type: 1 Plan d'ensemble

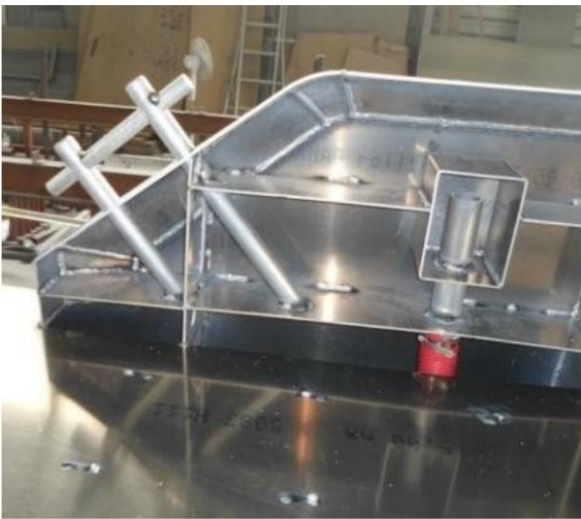
fait par: andre
date: 30/01/2023
feuille: 1 1

échelle: 1:55
format: A4
revision: 2
date approbation client:
signature client:

Buceo version
A título indicativo



GAMA FOXSEA UNDER CONSTRUCTION



Frequently Asked Questions

“Con su proa plana, ¿el barco golpeará las olas?”

The FOXSEA is designed so that the side of the door will open as well as the water, so the boat does not go into the water. Our FOXSEA 800 sails every day on the Irish coast, in a difficult area... difficult.

“The door is already leaking water? “Is the water constantly cool?”

No, the delantera door has not yet passed the water, it is there at the end of the flotation line. Furthermore, the door is designed to pass the water in the water at sea (limpieza, etc.), but never dream.

“Can you travel in a group, store or transport cargo through the door?”

¡f! ¡Está previsto para ello! All doors are designed according to BV standards and are verified by calculating the finite elements.

“Can you drink from the nearby door?”

If there is no problem, we can design an adaptable ladder where the exit door can be used as a trampoline.

"Can the boat sail?"

If the Foxsea is designed to be installed, it is a primary function of our technical specifications.



FOXSEA® 800 - See previous description

Empresa
Apellidos
~~Nombre~~
electronico
Telephone
Fecha

Price without VAT* FOXSEA 800	
-------------------------------	--

YAMAHA 2x150 HP engine

The "motor" service includes: hydraulic or mechanical direction / installation of the motor or motors / decantador or decantadores / electrical connections / electronic connections / batteries (in function of the connected material) / battery connection with peripherals / electrical and galvanic controls of the battery casco por parte de un experto / pruebas en el mar

Precio without IVA* of FOXSEA® 800 OPEN (alida del astillero)	€124,503
---	----------

OPTIONS (sin IVA) – not included, to be selected	
--	--

	€3500
Homologation division 222 with structural certification Bureau Véritas: depends on the level of personalization with respect to the basic version	
Approval NUC modules G or B	€6500
NUC approval module A1 (subject to other requests from the CSN)	€3500
Approval NUC modules G or B	€6,500
Assistance from our office of students for NUC approval	€2,500
River homologation	Según presupuesto
Assistance from our office of studies for river approval	€2500

Electrical and electronic options

Economical electronic package: GPS Sonda Helix 7+ VHF RT750 AIS+ antenna	€2,341
Standard electronic package: GPS Helix 9+ , VHF RT750, AIS+ , antennas	€2812
Medio electronic package: GPS Helix 10+ , VHF RT750, AIS+ , antennas	€3,348
Premium electronic package: GPS Solix 12+ , VHF RT1050, AIS+ , antennas	€5,969
PRO electronic package: GPS Apex 16+ VHF RT1050 AIS+ antenna	€7,942
Molinete LOFRANS 1000 W with 14 kg anchor	€1,890
SE40 Proa Propeller	€2,500

The technical characteristics and equipment are indicated by the original title and may be modified without notice from the manufacturer.

<p>Para el pago: 1/3 to carry out the pedido and 1/3 to the view.</p> <p>Saldo a la salida del astillero</p>	<p>Marker:</p> <p>ÿ Agreed</p> <p>ÿ He accepts the general sales conditions.</p>	<div></div> <p>Fechar y firmar</p>
---	---	------------------------------------

FOXSEA® 800 - See previous description

Calderería options

Aluminum top	€1950
Pórtico CMU 150 kg with stainless steel tilting	€2500
Lifting portico (dismountable) 300 kg (without SOCOTEC control)	€2500
Console-extending rear-wheel drive support (rear-mounted not included)	€980
Empuje front	€1,950
Silla para motor auxiliar	€550
Timonera surrounded by building door on the front side	€6,500
Cabin door	€2,200
Lona con cubierta para pasajeros	€2000
Lona de aluminum sur les pasajeros	€2500
Puerta en los baluartes	€660
Rear security door	€550
Standard motor protection	€450
Defense delta/omega 80x70 mm black - price for metro lineal	€200
Defense delta/omega 80x70 mm white - price for metro lineal	€250
Recargo por tapón con cierre	50 €
Additional passes to Medina - price for metro lineal	€25
Dismountable pasamanos - price for metro lineal	€250

Decoration

Exterior painting of the cabin and interior of the baluartes	€7,500
Bancos para pasajeros (2 banks of 3 plazas)	€1,200
Logotipo 500 x 500 mm	€500
Pintura en color blanco liso	According to the budget
Thermoadhesive lamina on the cover	According to the budget
Cover coating with anti-slip paint	According to the budget
Seadek: price per m² with installation	€250
Flexiteek: price per m² with installation	€450
Monochrome tapestry for bench of 2 people	€575
Monocromatic tapestry for bench of 3 pasajeros	€850

Others

Special antifouling for aluminum Other	€2,200
options, engines, transport...	According to the budget

Technical specifications and equipment are subject to the indicative title and may be modified without notice from the manufacturer's part.

For the trip: 1/3 to carry out
the trip 1/3 to view
Saldo al inicio de las obras

Marker:

ÿ Agreed

ÿ He accepts the general sales conditions

Fechar y firmar



Unsinkable aluminum
Customizable boats

Who are we?

Edge to Edge is an aluminum naval construction industry reconstituted by its experience and history over 20 years old (created in 2001). With the acquisition of the astillero in 2019, Loïc and Laurence Cheynet launched a new impulse on Board to Board with the aim of developing new boat models adapted to the needs of customers.

From here, Edge to Edge offers ranges of aluminum boats up to 24 meters for professionals, sailors and adventurers who enjoy the world of marine life. This new construction is a unique project, designed according to customer requirements with precise specifications.

Apasionados por su bajo, nuestros equipos de caldereros, soldadores, electromecánicos, carpinteros, arquitectos, ingenieros y técnicos navales se implican en cada proyecto para design, fabricar y personalizar des embarcaciones de calidad, 100% fabricadas en Francia y Bretaña. Las to sum up the most possible lengths and to put in place eco-diseños which demonstrate a compromise between sustainable products.

In order to involve more than one customer in the construction process, a periodic production sequence is carried out while sending photos of the different stages of construction of the boat.

<https://bord-a-bord-boat.com/>





VISION

We do all this possible so that our customers who are aficionados of navigation can enjoy their passion and passion. to fulfill your needs, and so that our professional clients can work on safe, efficient and reliable ships adapted to his profession.

MISSION

Our mission is to design and manufacture aluminum boats that comply with the specifications of our customers and comply with applicable standards. Participating in the ecological transition is a matter of honor for Edge to Edge, because we design our boats respectfully with the environment.

LO HUMANO POR ENCIMA DE TODO

From Edge to Edge we firmly believe that we actively listen to our customers and enable us to constantly improve and continually innovate to improve our new products. This way, we can offer you the most suitable solutions for our activities. The team's work is a full-time job, both internally and with multiple people.





Grupo Armor MarineInternational
EN CIFRAS

+600 buques en el agua

35 boats from 4 to 24 m produced all year round

37 employees

G 2 + Banco de France quotation

2000 m² of workshop

70% of the billing in professional boats

Between 25 % and 66 % of the French billing, según
the year

Our competencies in interna



Naval architecture: design and conception



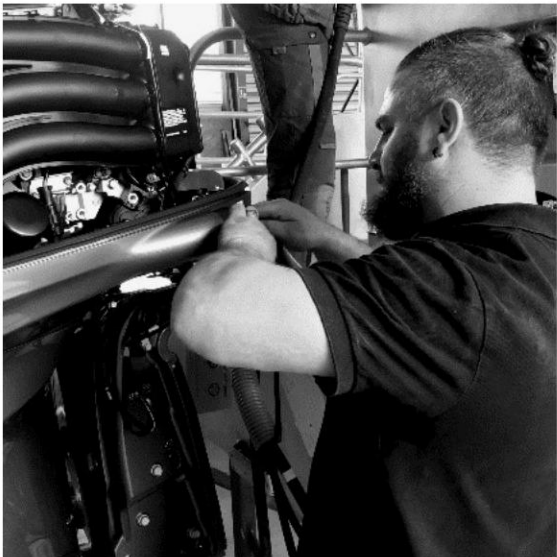
Aluminum calderería



Electromechanics



Design and realization of interior conditioning
of habitable boats and refit





Why choose an aluminum bar?

QUALITY

All our bars are completely welded according to the TIG/MIG protocol and are intended to be a calibration standard for all of them.

USEFUL LIFE

Aluminum is synonymous with durability, so when comparing an aluminum bar it is a large plazo reversal.

AESTETICA

Our new boats are based on a surface treatment taken for an impeccable finish. There are a number of options that allow you to personalize the design of the boat.

ROBUST

The structure and optimization of the aluminum thickness that makes up the boat make it solid and durable.

RESISTENCIA

The aluminum presents a great resistance to the fingers and to the friction.

MEDIO AMBIENTE

The aluminum used for manufacturing is made from 70% recycled aluminum. The aluminum can be recycled up to 98%, which confirms its ecological design.

INSUBMERSIBILITY

All new boats and professional boats have an insufferable design.

FLAMABILITY

Safety on board is reinforced by its characteristics non-flammable aluminum.

Grupo Armor Marine

International

Amarès - Guimaëc (29)

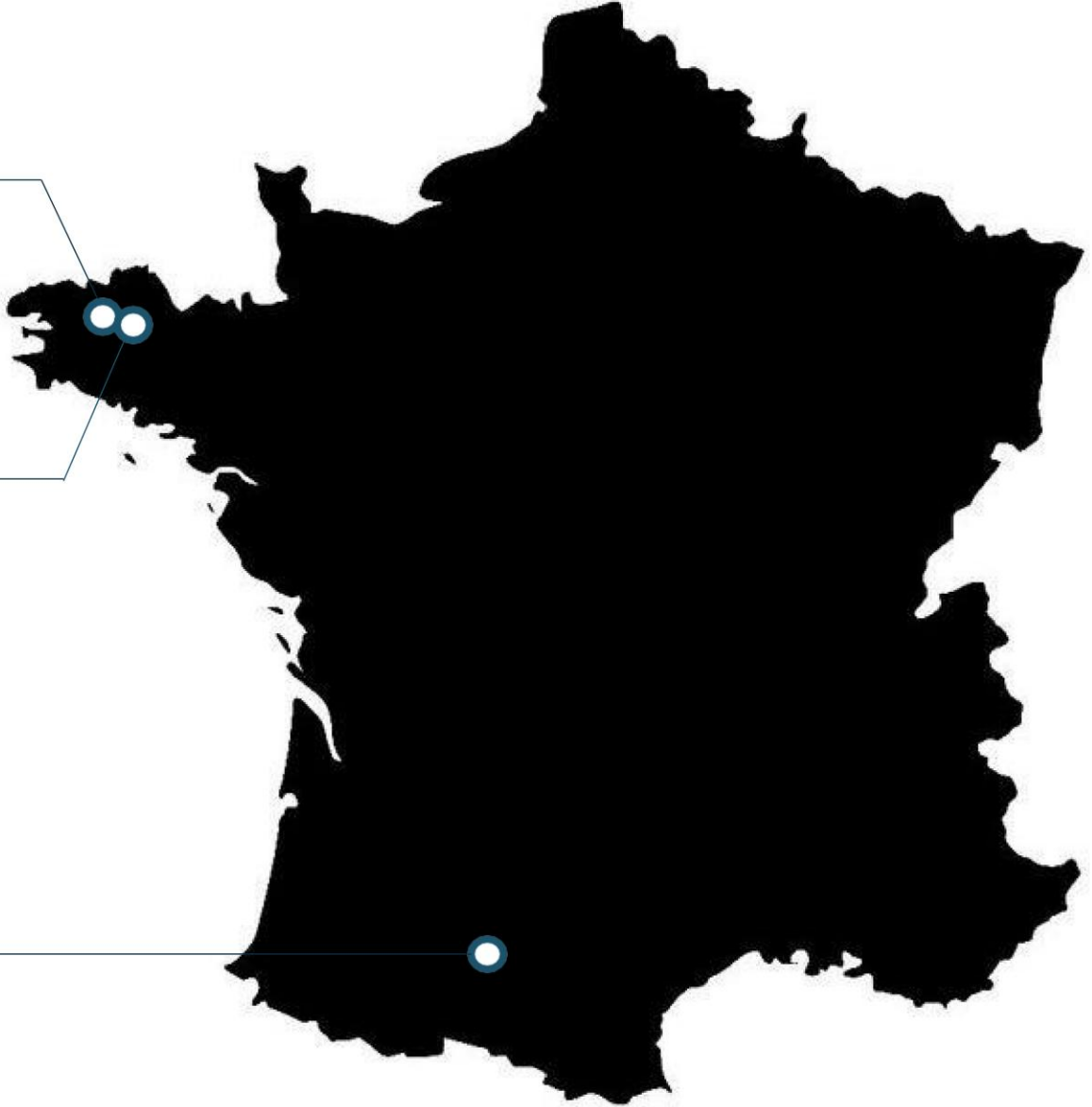
Aluminum naval construction taller

Bord à Bord - Plestin les Grèves (22)

- *Aluminum naval construction taller*
- *Electromechanical workshop*
- *Carpentry size and assembly*
- *Technical Office*
- *Sede*

Occitanie Marine Engineering Works

Vives® - Colomiers (31) *Office of naval architecture studios*



SOME REFERENCES



BOARD TO BOARD SHIPPING IN TODO EL MUNDO



GENERAL CONDITIONS OF SALE 1/2

These general sales conditions are imperative for all sales of goods from the company EDGE TO EDGE to the comprador. This applies to the contractual relationships between the BORD A BORD company and its comprador and constitutes the legal basis of all sales that do not have the object of receiving particular expresses accepted by other parties.

ARTICLE 1. - APPLICATION OF THE GENERAL CONDITIONS OF SALE

These General Conditions of Sale 22/04/2020CGV are subject to systematic contracting with each comprador so that you can carry out on-site delivery and apply fully to all sales of motorized boat goods or new products manufactured by BOARD TO BOARD. Therefore, the desire to carry out a procedure implies full adherence and without reservations from the Company to the present CGV, with the exclusion of any other documents, such as catalogs or catalogs, issued by the Company or by the manufacturer of the Mercantile, which alone has an indicative value.

ARTICLE 2. - PEDIDO - MODIFICACIÓN DE MERCANCÍA - ENTREGA

The order will be final when it is assumed or ordered from Board to Board if it is accepted and confirmed by the Comprador. Any modification of the instruction will be subject to written notice between the parties. Any modification will automatically result in a flattening of the initial entry window. The sale of the boat will be formalized through a firm contract agreement.

ARTICLE 3. - FECHA DE DISPONIBILIDAD Y RETIRADA DE LA MERCANCÍA

The information available for marketing is specified in the product form. For personalized merchandise (option items), the item available has an indicative title. As soon as the Company carries out the necessary transactions with its suppliers, it will inform the comprador and it will be finalized.

The Comprador undertakes to accept the mercancía in the installations of Edge to Edge (EXW) within a period of 15 days from the date of availability indicated in the contract window. Transcurrido this plazo, EDGE TO EDGE may, if the sea, rescind the sale without prior notice and have availability of the mercancía. The advance message from the Comprador will be automatically sent from EDGE TO EDGE.

ARTICLE 4. – WARRANTIES AND RESPONSABILIDADES

4.1 COMMERCIAL WARRANTY

The Comprador benefits from the BOARD TO BOARD commercial guarantee under the following conditions and terms:

The warranty is 1 year for the aluminum structure of the boat during caldera work and

installation of accessories for professional boats.

The warranty is 2 years for the aluminum structure of the boat during heating operations and the assembly of accessories for recreational boats.

The warranty is 1 year for accessories - Manufacturer's warranty The warranty is personal to the comprador and not transferable

The warranty applies only if the user recommendations indicated in the owner's manual are respected.

Any intervention on the ship without the written authorization of the manufacturer will result in the loss

of this guarantee and, eventually, to legal claims.

If the devolution into guarantee requires the intervention of Board to Board, this will be carried out in full. In this case, the gases related to the devolution of the vessel to the size corresponding to the cargo of the owner of the misma.

4.2 LEGAL GUARANTEES

In case the owner makes changes in the market, he will have to resort to a professional or an authorized repairer for his maintenance, repair or repair of replacement parts. On the contrary, the comprador will lose the benefit of the legal guarantees from Board to Board.

ARTICLE 5. – PRICES

The sales prices of the Products are applicable at the moment of the company's assumption or the price of the order for the models of the boats in series.

The sales prices of the products may be adjusted at the moment of the pedido of the primary material and other components in the case of models to medida or that have been modified by a naval architecture.

In case of specific requests from the Maritime Administration, certification bodies, certification, maritime or fluvial operations or other authorities, during or after construction, the additional costs may generate an increase in price.

In the event of significant fluctuations in prices of +/-5% of primary or component materials at the time of your purchase, an adjustment of the sales price may also be produced.

The transport prices on these items may be updated at the time of delivery.

Prices are expressed in euros without IVA.

No damage, shipping, handling, packaging, transportation, shipping, storage, registration or payment will always take place with the Comprador's cargo. Any charge, charge, derecho or other service that must be paid in accordance with the French standards or those of an importer country or of transport will correspond to the cargo of the Comprador.

GENERAL CONDITIONS OF SALE 2/2

ARTICLE 6. - PAYMENT

6.1. MODALITIES

However, the contrary is stipulated in our presumptions or albaranes of pedido, the Comprador will give an advance of 30% of the price with IVA included at the moment of the pedido, without which this amount constitutes in any case a deposit.

Single merchandise is sold by Edge to Edge (excl. EXW item) on this page.

.

Edge to Edge will not concede any descuento por pago al contacto o en una fecha prior to the result of these General Terms and Conditions.

6.2. RETRASO

Any person who does not care about the offense that appears in the presupuesto or in the law of entry will be released, of course, to the application of penalties for an import equivalent to the triple type of legal interest. In addition to subsequent penalties, you will be charged a fixed rate of €40 in terms of compensation for cobro gas.

ARTICLE 7. - TRANSFERENCE OF RIESGOS

7.1. MODALITIES

From the start of the Mercancías, including in the installations of Bord to Bord, the riesgos, in particular of loss, robustness, deterioration of the Mercancías or damage caused by these, are transferred to the Comprador, without prejudice to the reservation of property object of the article 9 below. Therefore, correspond to the Comprador, from the moment of the transfer of the goods, secure the Mercancías vendidas contra robo, incendio or any other form of destruction, deterioration, accident or disappearance. Likewise, the Comprador must subscribe to a security policy that guarantees civil liability. Edge to Edge means any penalty for loss of operation as a result of the immobilization of the boat. The customer commits himself to not claiming on Board to Board funds that exceed the limits of his security policy.

7.2. IN THE MARCO OF AN EXTERIOR VENT

For commercial sales with an extraneous destination, the transfer of funds and costs will be carried out under the CCI Incoterm mentioned in the presumption or in the delivery document, in its final version valid at the moment of the elaboration of the offer.

ARTICLE 8. - PROPERTY RESERVATION

Merchandise is subject to ownership of the Edge-to-Edge business when it is complete. cobro del precio.

ARTICLE 9. – VARIOUS PROVISIONS

In the event that any of the stipulations of the present General Conditions of Sale are canceled by a legislative or regulatory provision or by a judicial decision, all of the following provisions are applicable.

ARTICLE 10. – FUERZA MAYOR

The occurrence of a most serious case is as effective as suspending the ejection of the las contractual obligations of the company Bord à Bord. This is considered to be the case when you contact the Board-to-Board Company for normal operation at the manufacturing stage or in the delivery of the products. Se consideran cases of major fire, in particular, the total oils or

parcials o las de uno de sus proveedores, subcontratistas o transportistas, así como the interruption of transport, the supply of energy, primary materials or parts , pandemics and epidemics.

ARTICLE 11. – LEY APPLICABLE - COMPETENCIA

For any dispute relating to the application of these general sales conditions or the services provided by BORD A BORD, the Commercial Court of Saint-Brieuc will have exclusive jurisdiction.